



project main street

---



# Meeting Flow

- Presentation
  - Downtown bike network
  - Sidewalk furnishings
  - Art and history placemaking
- Q&A
- Walkabout (boards) & your feedback (survey)

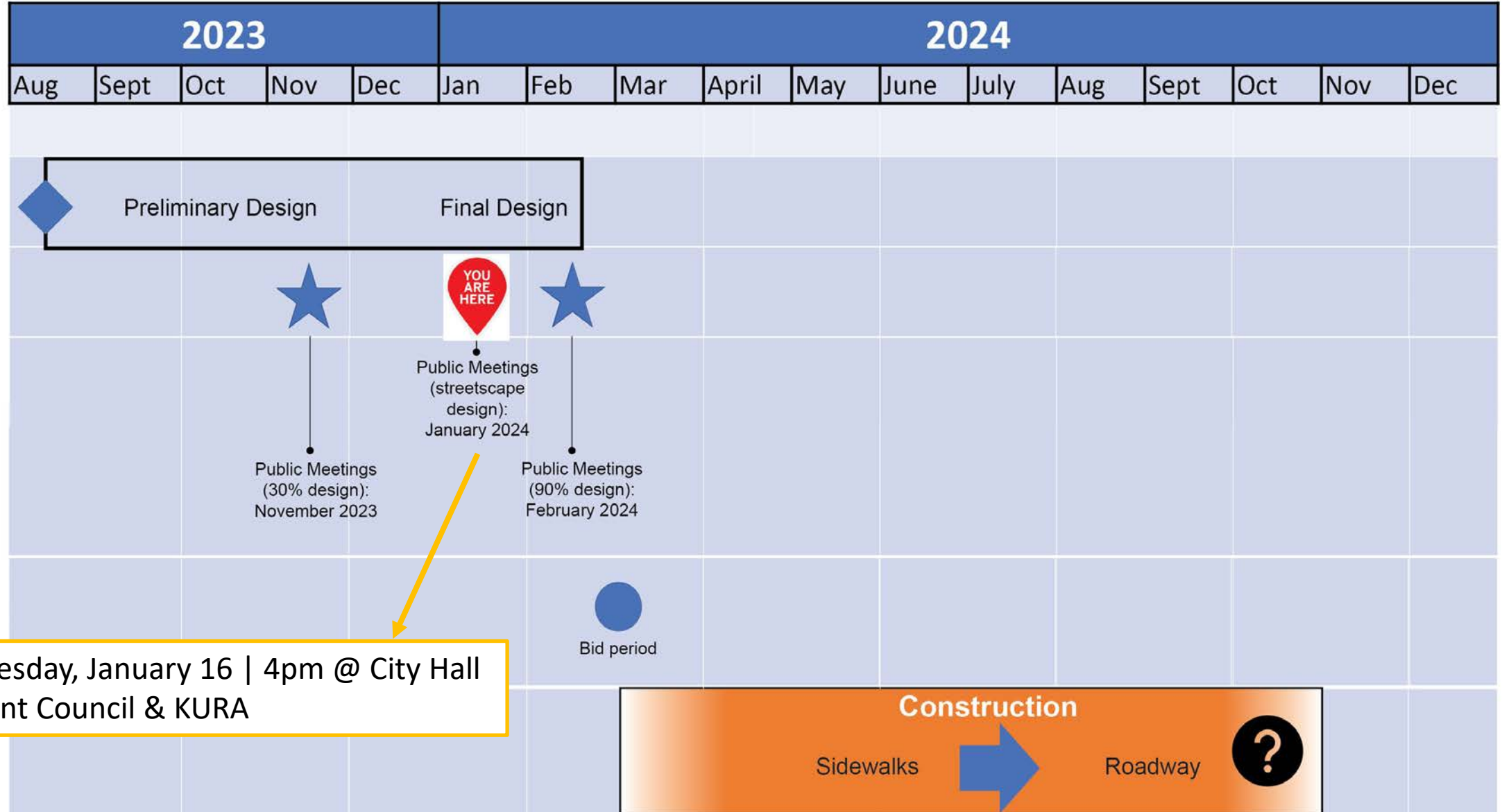
# Project Scope



River Street

10<sup>th</sup> Street

# Project Schedule



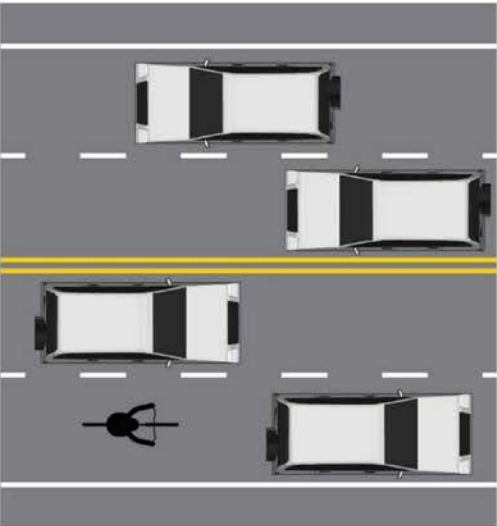
# Downtown Bike Network

# Bike Facility for Each Rider Type

**Strong & Fearless**



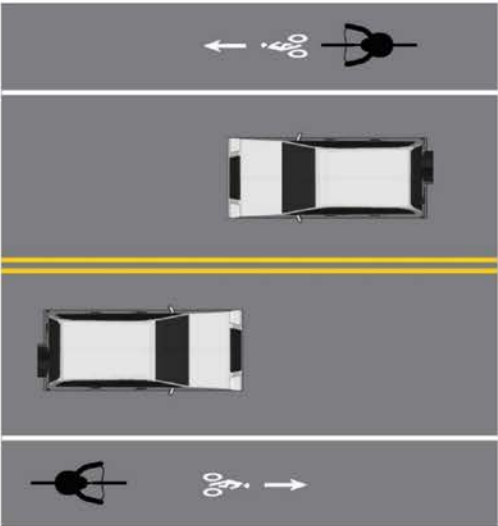
Level of Traffic Stress: 4  
< 5%



**Enthusied & Confident**



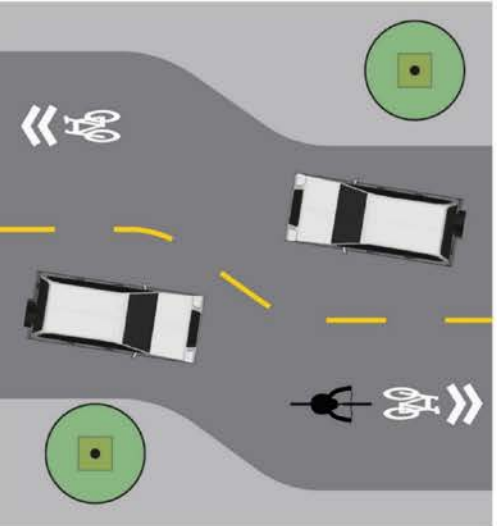
Level of Traffic Stress: 3  
5 - 10%



**Interested & Concerned**



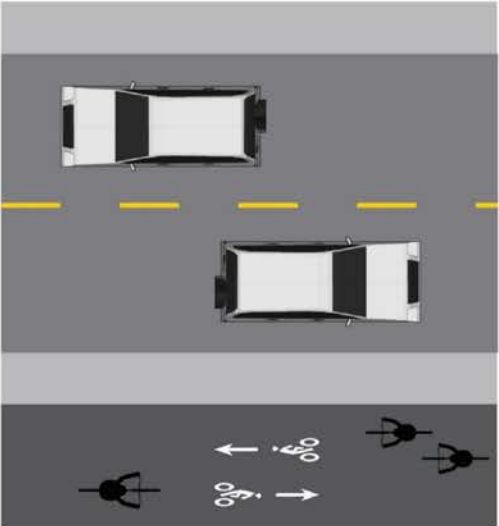
Level of Traffic Stress: 2  
~ 60%

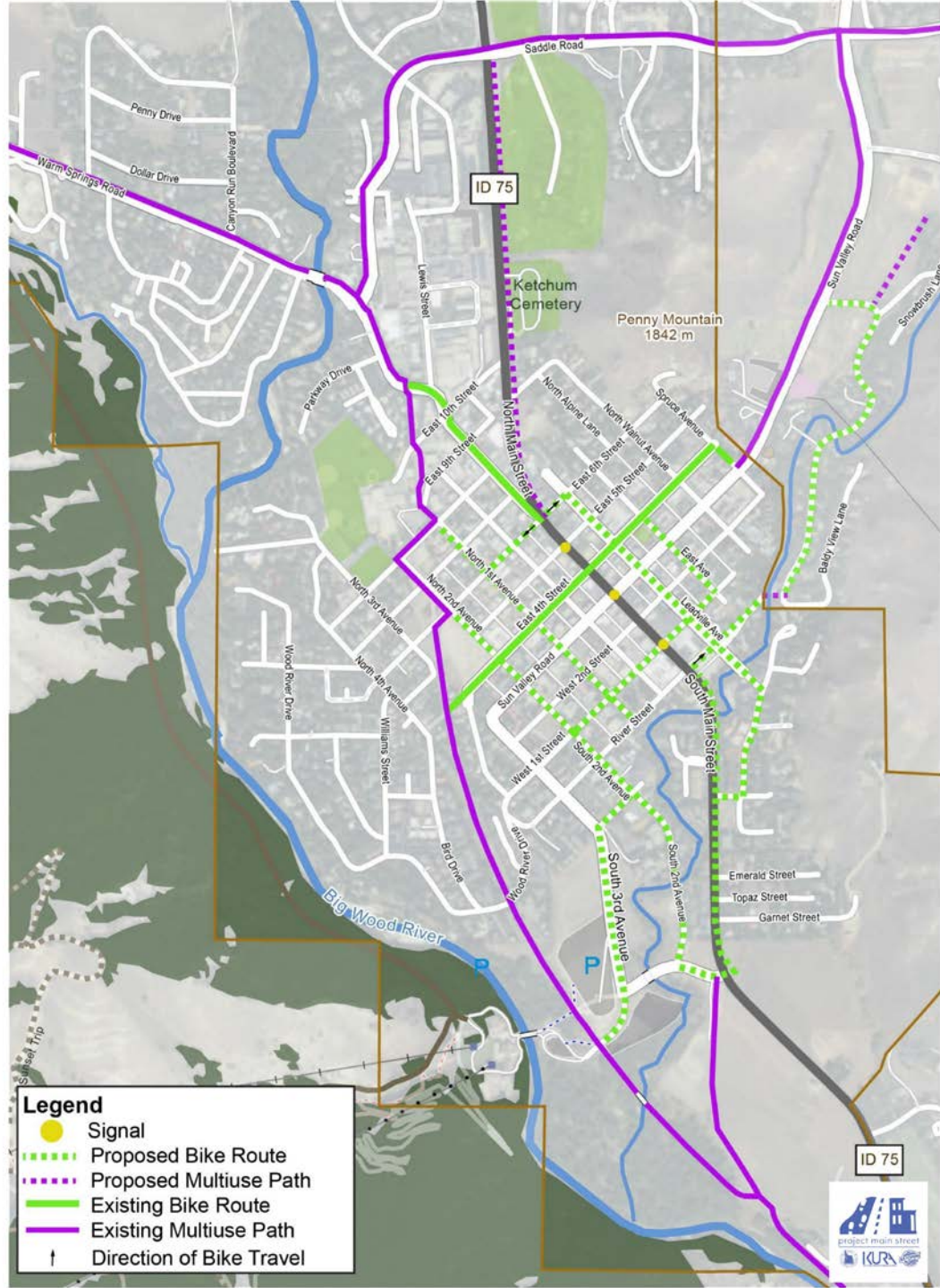


**Enthusiastic & Unskilled**



Level of Traffic Stress: 1  
25 - 30%





**Legend**

- Signal
- - - Proposed Bike Route
- - - Proposed Multiuse Path
- Existing Bike Route
- Existing Multiuse Path
- ↑ Direction of Bike Travel



# Bike Network Fundamentals

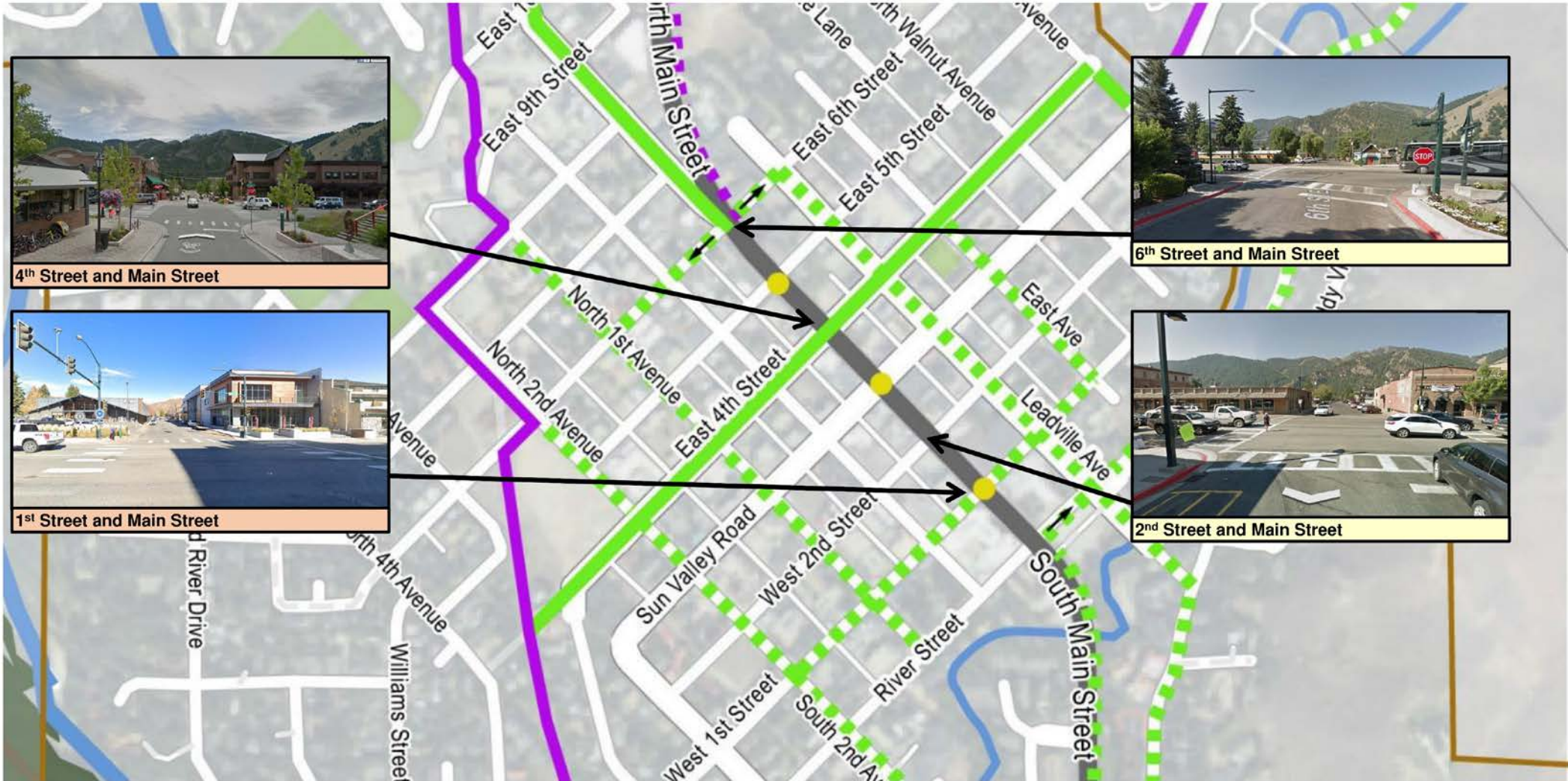
## Vehicle Realm Shared with Cyclists

- Main Street crossings at 1st, 4th, and 5th Streets
- Cyclists remain on bike and cross with vehicle signal
- Intersection includes bicycle specific pavement markings
- Cyclists guaranteed crossing opportunity with signal

OR

## Pedestrian Realm Shared with Cyclists

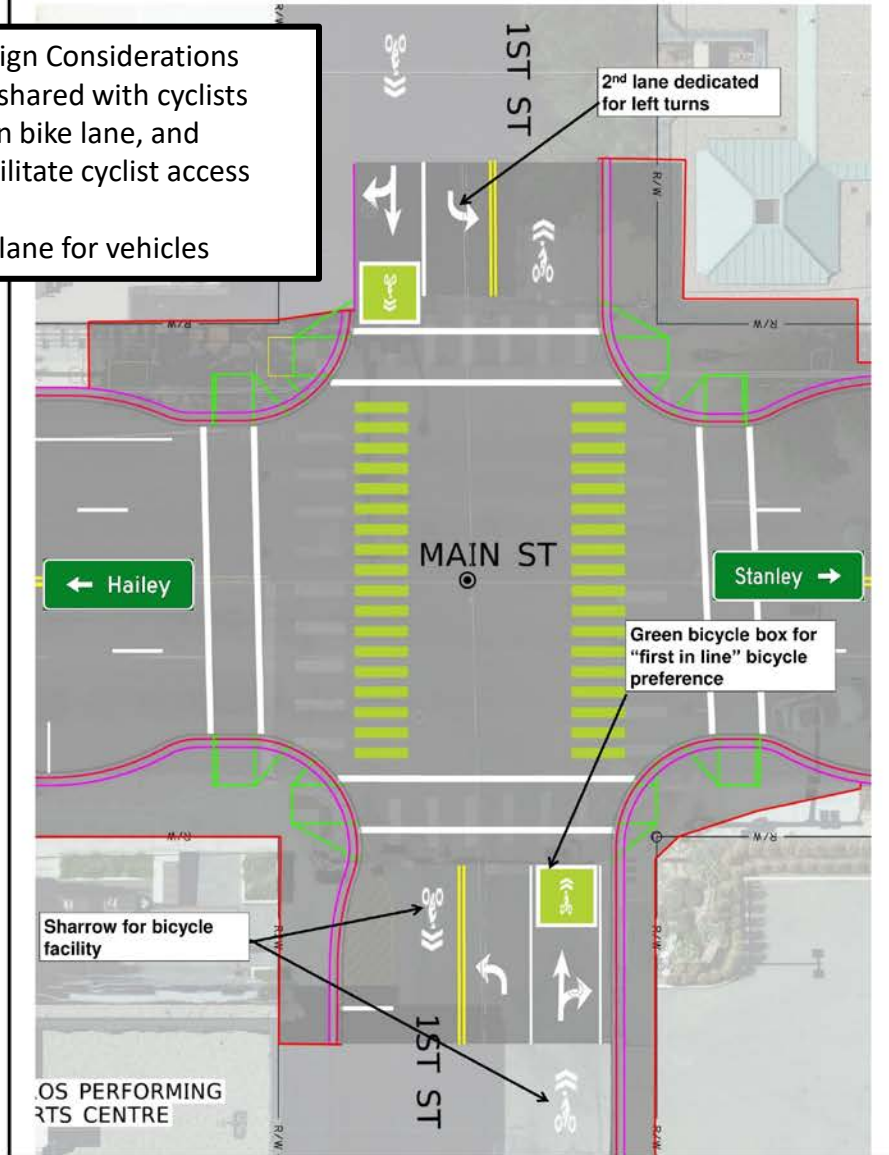
- Main Street crossings at 2nd, 4th, and 6th Streets
- Cyclists dismount and walk bikes in pedestrian crossings
- No signal to guarantee break in traffic to cross
- No bike specific pavement marking
- Flags available for visibility





# 1<sup>st</sup> Street / 5<sup>th</sup> Street Alternative Configurations

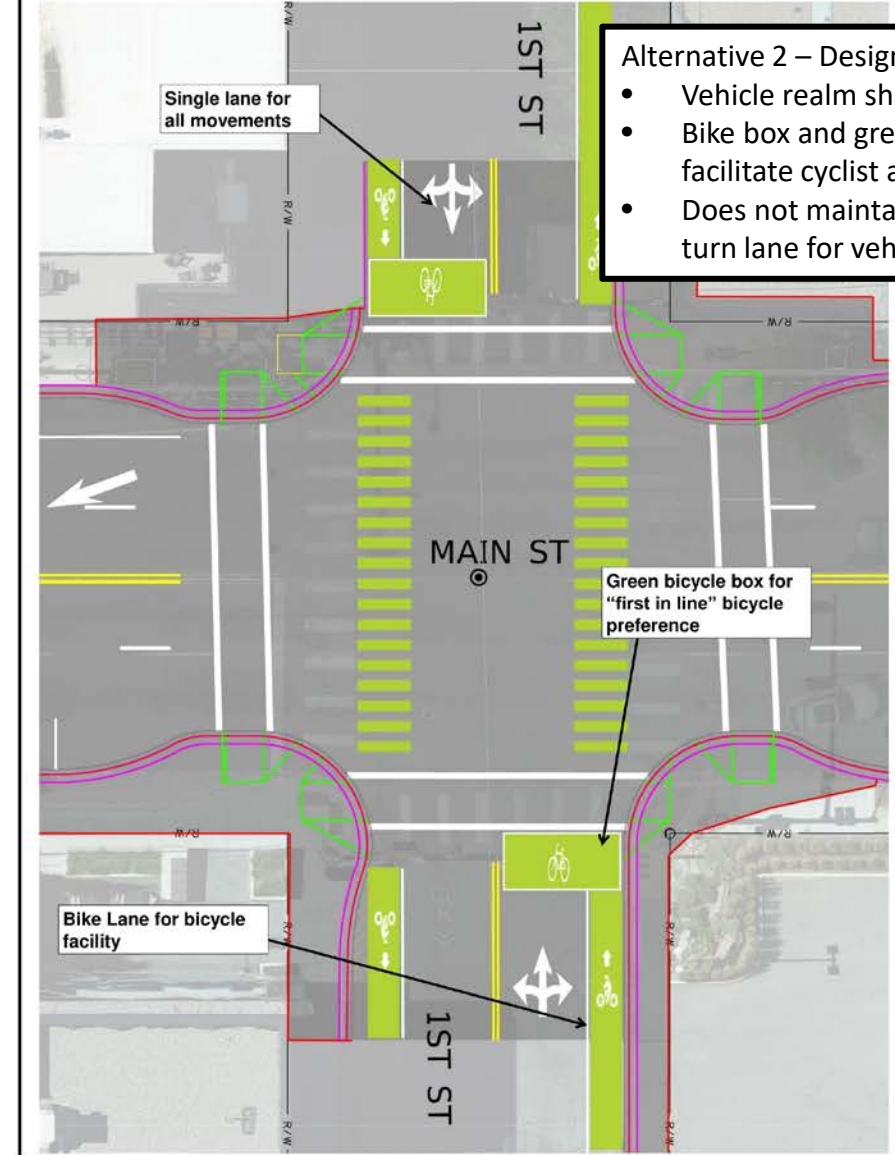
## ALTERNATIVE 1



### Alternative 1 – Design Considerations

- Vehicle realm shared with cyclists
- Bike box, green bike lane, and sharrow to facilitate cyclist access and crossing
- Adds left turn lane for vehicles

## ALTERNATIVE 2

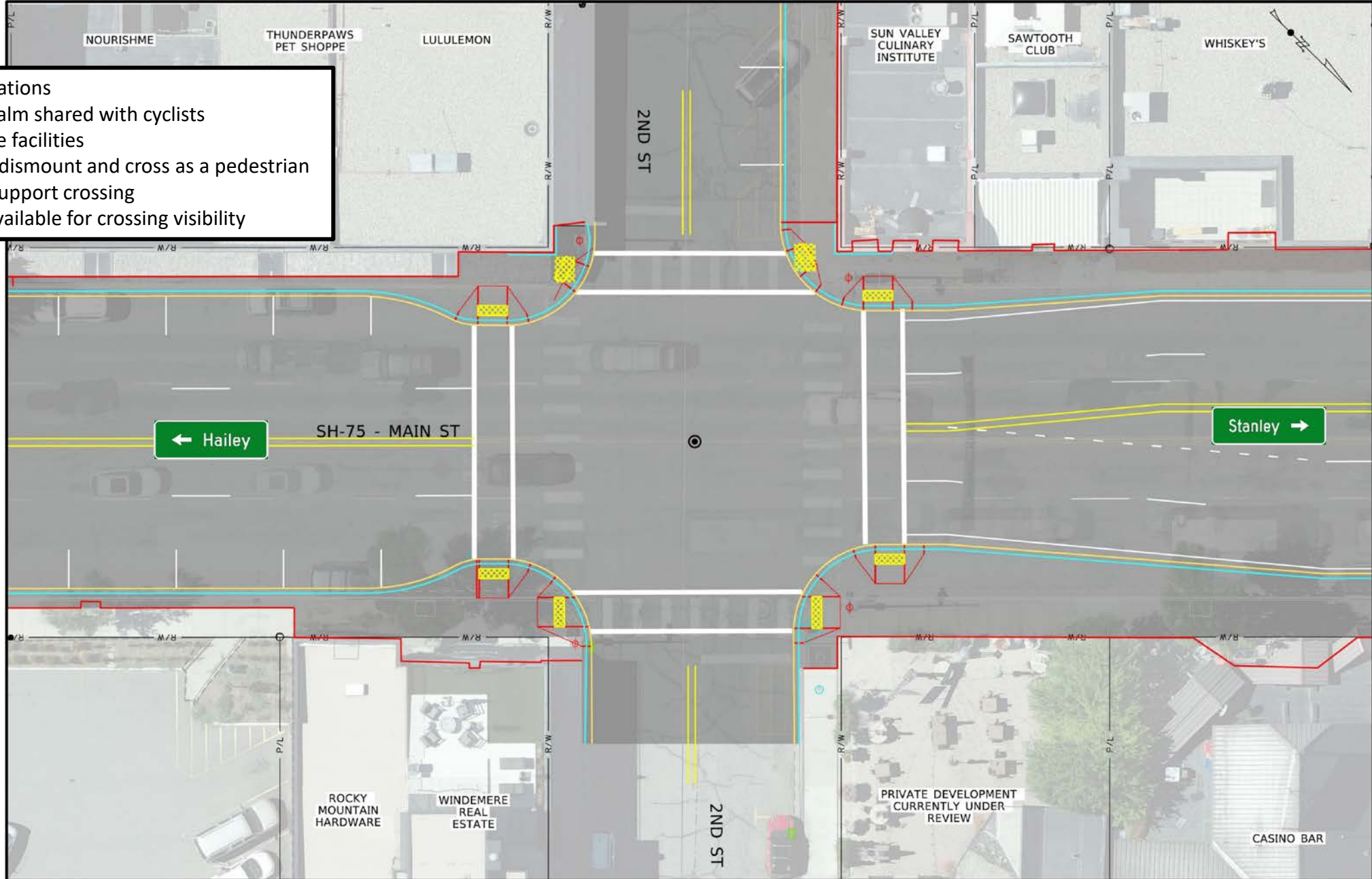


### Alternative 2 – Design Considerations

- Vehicle realm shared with cyclists
- Bike box and green bike lane to facilitate cyclist access and crossing
- Does not maintain separated left turn lane for vehicles

# 2<sup>nd</sup> Street and Main Street

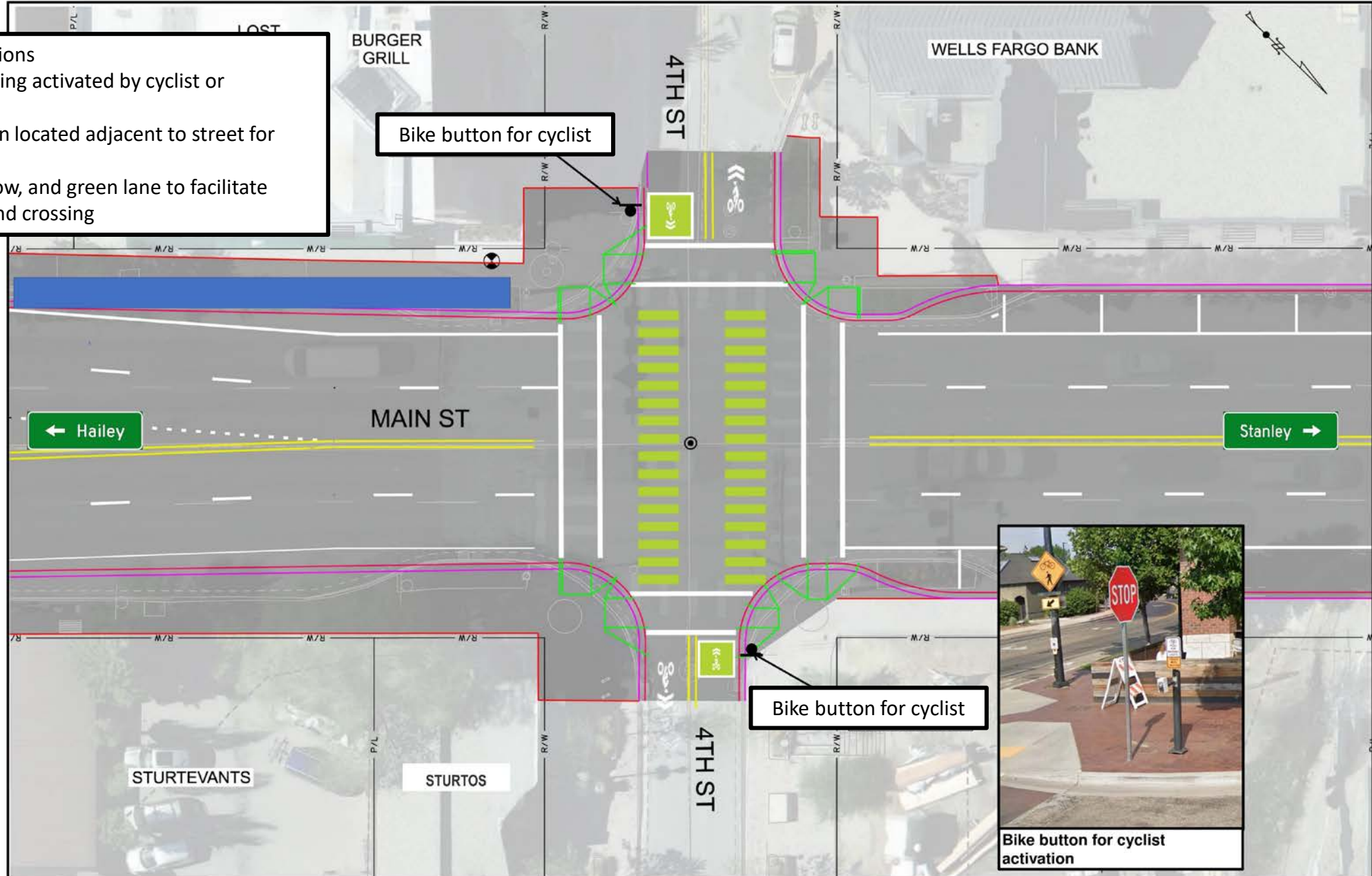
- Design Considerations
- Pedestrian realm shared with cyclists
  - No added bike facilities
  - Cyclists must dismount and cross as a pedestrian
  - No signal to support crossing
  - Green flags available for crossing visibility



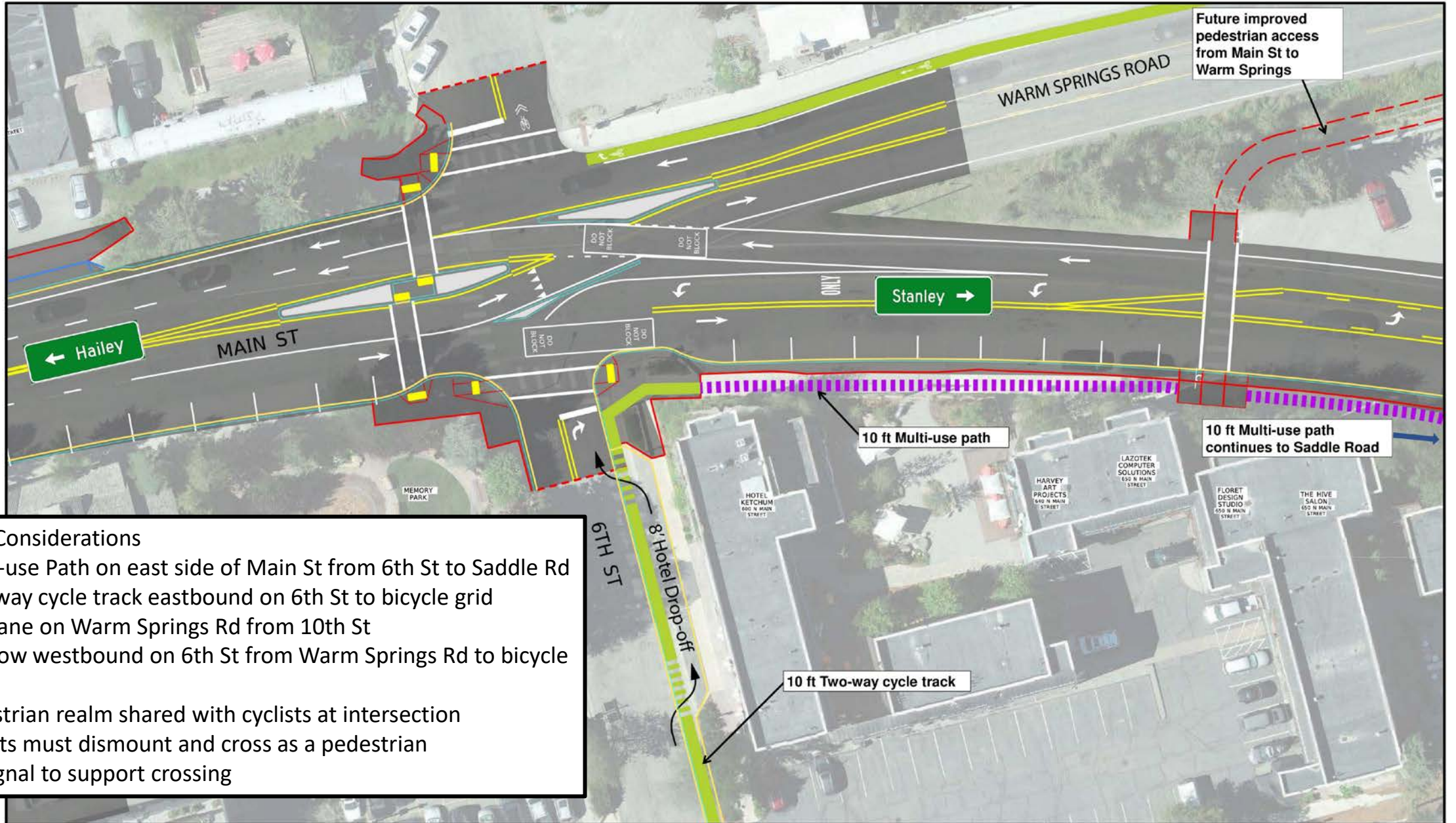
# 4th Street and Main Street

## Design Considerations

- Signalized crossing activated by cyclist or pedestrian
- New bike button located adjacent to street for cyclist use
- Bike box, sharrow, and green lane to facilitate cyclist access and crossing



# 6<sup>th</sup> Street and Main Street



## Design Considerations

- Multi-use Path on east side of Main St from 6th St to Saddle Rd
- Two-way cycle track eastbound on 6th St to bicycle grid
- Bike lane on Warm Springs Rd from 10th St
- Sharrow westbound on 6th St from Warm Springs Rd to bicycle grid
- Pedestrian realm shared with cyclists at intersection
- Cyclists must dismount and cross as a pedestrian
- No signal to support crossing

# Sidewalk Furnishings

# Sidewalks, Street Trees, and Furnishing Enhancements

Existing Condition



Potential Streetscape Enhancements



# Sidewalks, Street Trees, and Furnishing Enhancements









# Street Furnishings

## Furnishings Layout

## Sun Valley Road & Main Street Intersection



### LEGEND

	BENCH		POTENTIAL ART LOCATION
	BIKE RACK		TRASH RECEPTACLE
	PEDESTRIAN LIGHT WITH FLOWERING BASKETS		
	PLANTERS		



# Street Furnishings

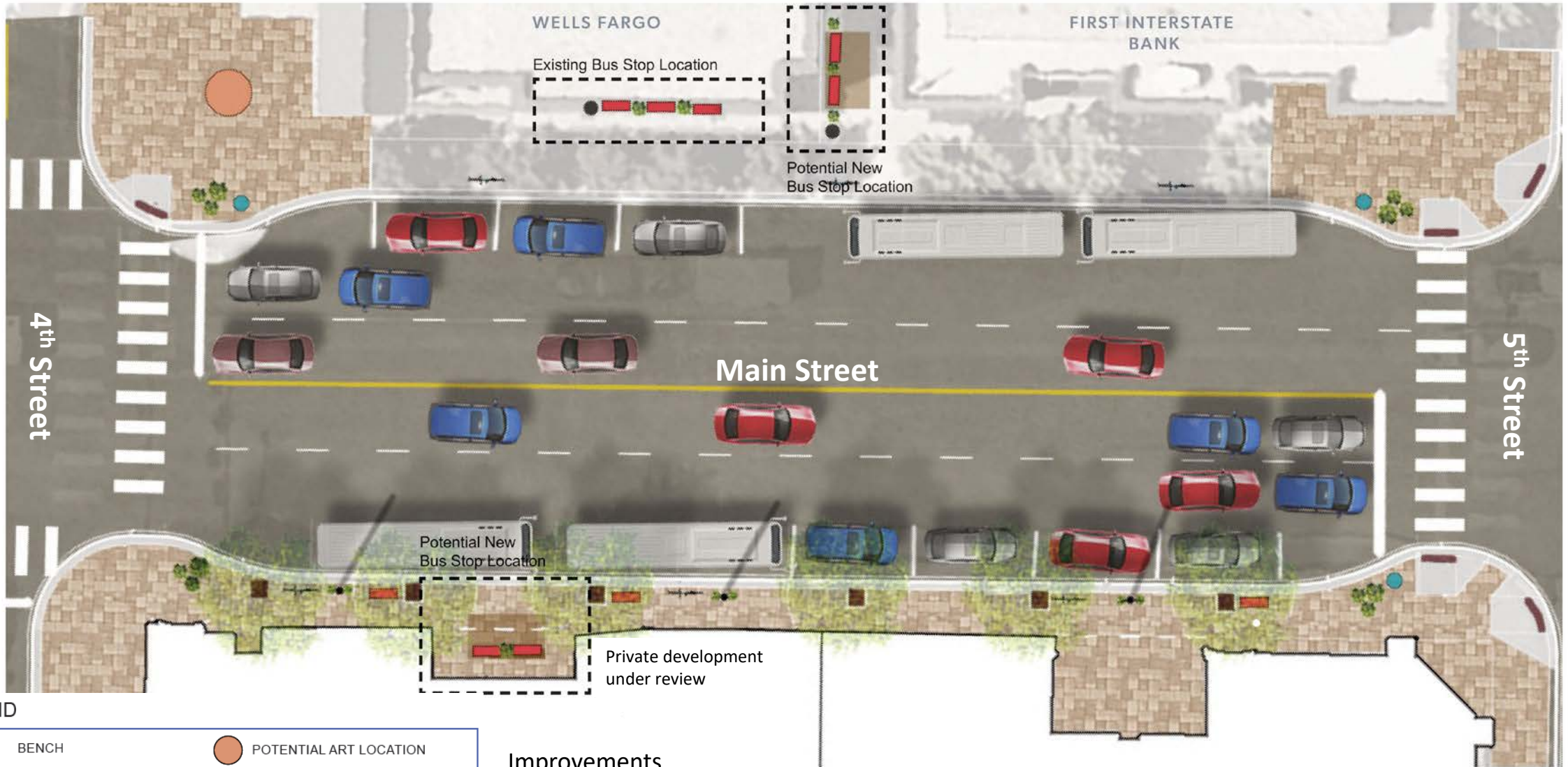
## Furnishing Collection 1





## Furnishing Collection 2



# Bus Stop Locations & Improvements



## LEGEND

	BENCH		POTENTIAL ART LOCATION
	BIKE RACK		TRASH RECEPTACLE
	PEDESTRIAN LIGHT WITH FLOWERING BASKETS		PLANTERS

## Improvements

- Cover
- Benches
- Planters
- Trash receptacles
- Outdoor heaters
- Reader boards

# Transit – Example Bus Stop Furnishings



# Art & History

# Main Street Art & History Goals

## ELEVATE THE PRESENCE OF ART & HISTORY DOWNTOWN

Create an artful and distinctive Downtown environment that brings Ketchum's history to life

## STRENGTHEN KETCHUM'S REPUTATION AS A CULTURAL HUB

Enhance local, national, and international standing as a vibrant arts community and place for heritage tourism

## STIMULATE LEARNING AND UNDERSTANDING OF KETCHUM'S HISTORY

Communicate Ketchum's culture and history through public art, architecture, wayfinding, and signage

## MAINTAIN HISTORICAL RELEVANCE AND SENSITIVITY

Ensure that new installations demonstrate an appropriate scale and message befitting of Ketchum's history

## DEMONSTRATE LOCAL AND CIVIC PRIDE

Connect locals and visitors to Ketchum's history and its commitment to arts and culture

## INSPIRE IMAGINATION

Embrace public art as a means to encourage the community to view their surroundings from a fresh perspective

## BECOME AN AGENT FOR CHANGE

Educate the community and visitors about the vital importance of historic preservation in a growing and developing western town

# Main Street Art & History Themes

## SHOSHONE-BANNOCK TRIBES



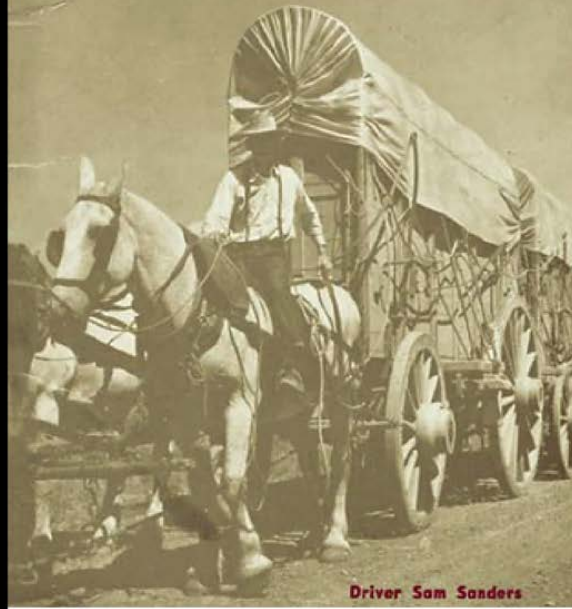
The Camas Lily Days celebrated by the Shoshone-Bannock tribes in Fairfield



## INDUSTRY: Mining, Livestock, and Railroads

### WAGON DAYS

KETCHUM, IDAHO



## FAMOUS FIRSTS AND FIGURES



# Main Street Art & History Themes

## RECREATION



## ART AND CULTURE



## NATURE AND WILDLIFE



# Main Street Art & History Plan





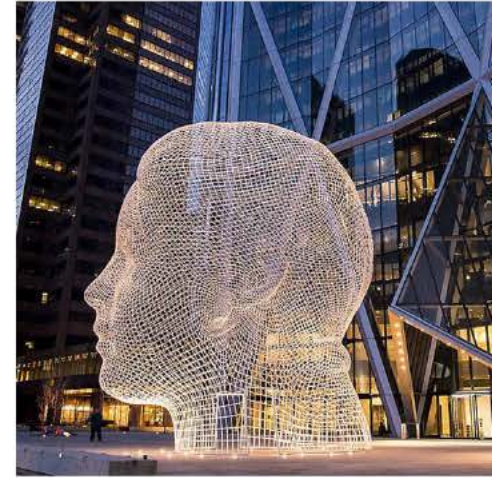
# Main Street Art & History Concepts – Large Scale

The enhancements on Main St set the stage for substantial, Ketchum-specific public art installations in the downtown area—specifically at the southern entry at River St and the northern entry at the Warm Springs Rd “fork”. These artistic gateways are not only impactful in leaving a lasting impression on visitors but also stand as a powerful expression of Ketchum’s vibrant arts and cultural richness. The design and execution of these installations will also present significant opportunities for commissioning.

Northern Gateway

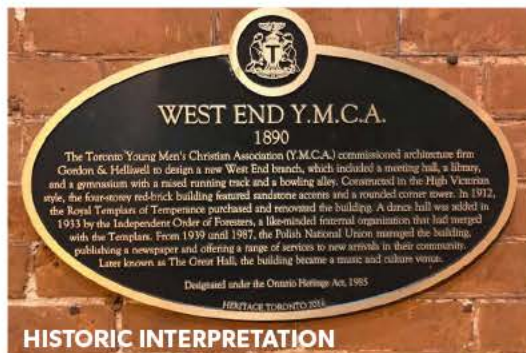


Southern Gateway



# Main Street Art & History Concepts – Small Scale

Within the Main St corridor, amidst the enhancements of sidewalks, street trees, furnishings, and pavings, there exists an opportunity to tell the story of the past, present, and future Ketchum. This can be achieved through smaller-scale art strategically placed at key intersections and integrated into pedestrian lights, whether through banners showcasing vintage style posters, historic informational signage, painted murals, or smaller sculptures.



# Main Street Art & History Concepts – SV Road Intersection

The redesigned Main St introduces a raised intersection at Sun Valley Rd, aiming to enhance both the pedestrian environment and traffic flow. An opportunity arises to utilize graphic art as a medium to imprint the pavement with meaning. Specifically, commissioning art from a native artist that can serve as a celebration and tribute to the land, honoring its significance as beloved and once inhabited by the Shoshone-Bannock Tribe.

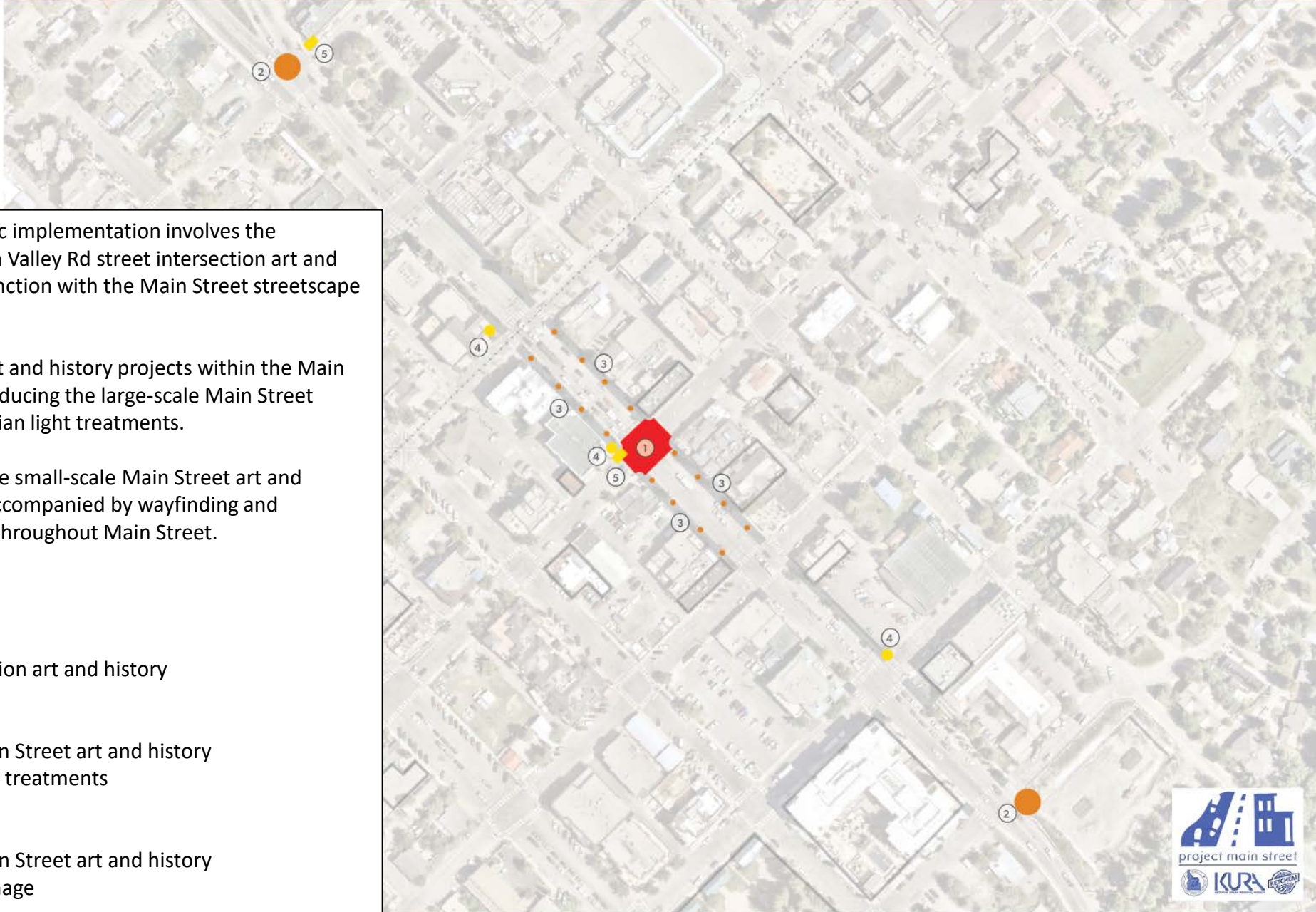


# Main Street Interpretive and Wayfinding Signage

The storied past of Ketchum can be shared through creative interpretive signage woven throughout downtown's buildings, along streets and parks. Materials and design should be reflective of Ketchum's rustic surroundings, be simple and expressive.



# Art & History Phased Implementation Plan






In Phase 1, the strategic implementation involves the construction of the Sun Valley Rd street intersection art and history design in conjunction with the Main Street streetscape improvements.

Phase 2 extends the art and history projects within the Main Street corridor by introducing the large-scale Main Street pieces and the pedestrian light treatments.

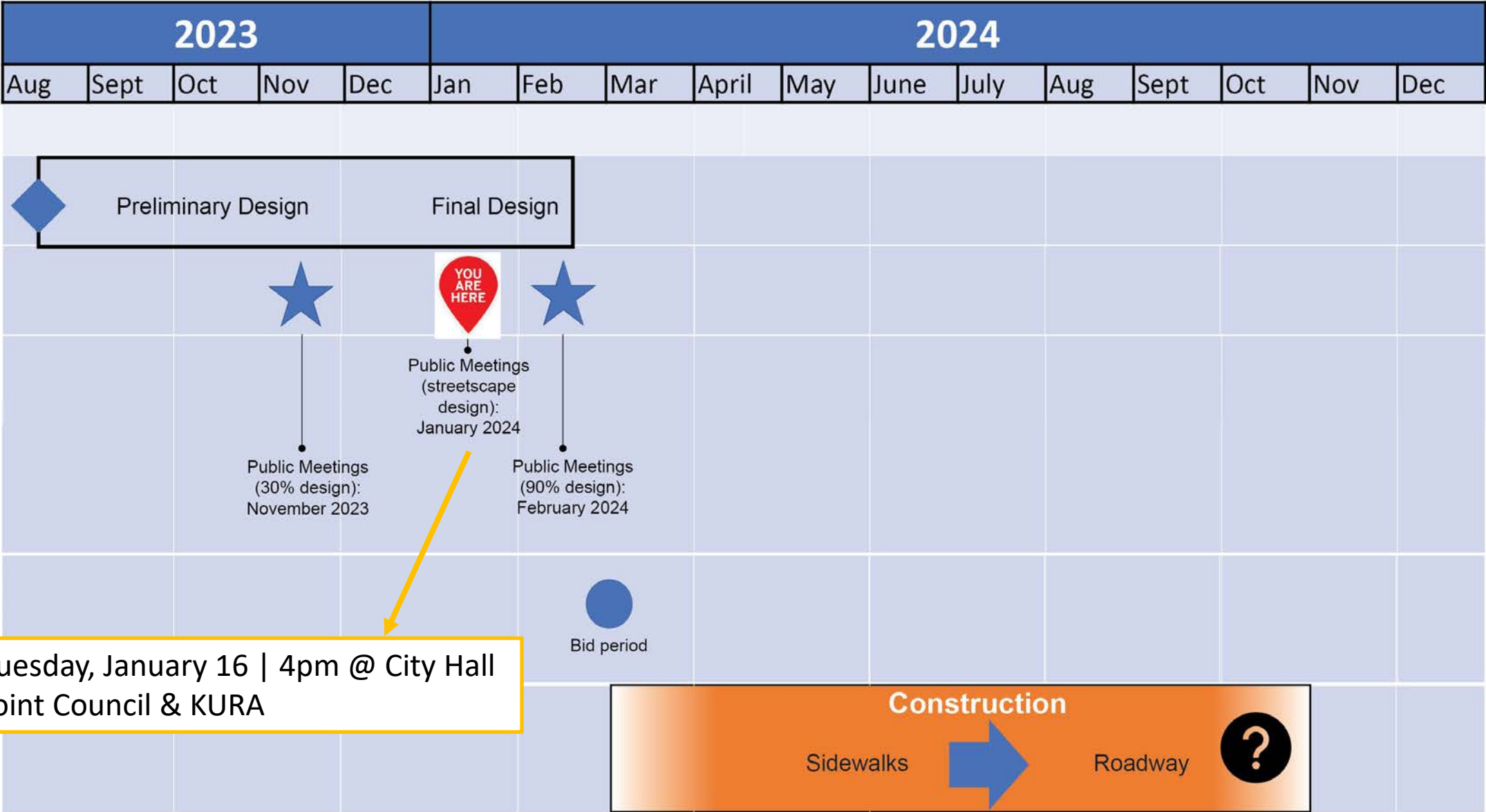
Phase 3 implements the small-scale Main Street art and history components, accompanied by wayfinding and interpretative signage throughout Main Street.

## LEGEND

-  Phase 1  
1. Street intersection art and history
-  Phase 2  
2. Large scale Main Street art and history  
3. Pedestrian light treatments
-  Phase 3  
4. Small scale Main Street art and history  
5. Wayfinding signage



# Project Schedule



# Next Steps

- Q&A
- Feedback:
  - Review boards/dots
  - Survey
- Future questions & information, visit:  
[projectketchum.org](http://projectketchum.org)

