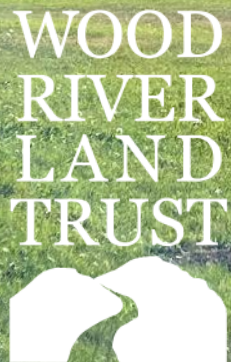


Warm Springs Preserve

Joint Council and P&Z Meeting

November 15, 2022



SUPERBLOOM



Team

Project Partners



City of
Ketchum



Wood River
Land Trust



Friends of the Warm
Spring Preserve
Committee

Design Team



Superbloom

Denver, CO

Community Engagement,
Landscape Architecture



Rio Applied Science &
Engineering

Boise, ID

Engineering,
Geomorphology,
Hydrology

ECOSYSTEM SCIENCES, LLC

Ecosystem
Sciences

Boise, ID

Ecological Systems



North Fork Native
Plants

Rexburg, ID

Native Plants for
Restoration

Process

Vision Public Meetings Design + Planning Action





Public Engagement

A summary and review of public
events, meetings and feedback
that was received

Public Open House
September 13, 2022

Public Events To Date

Public Meetings, Online Surveys, Website & Social Media, Stakeholder Meetings, Other Events

June 21

Summer Solstice Celebration

September
September 13
September 14

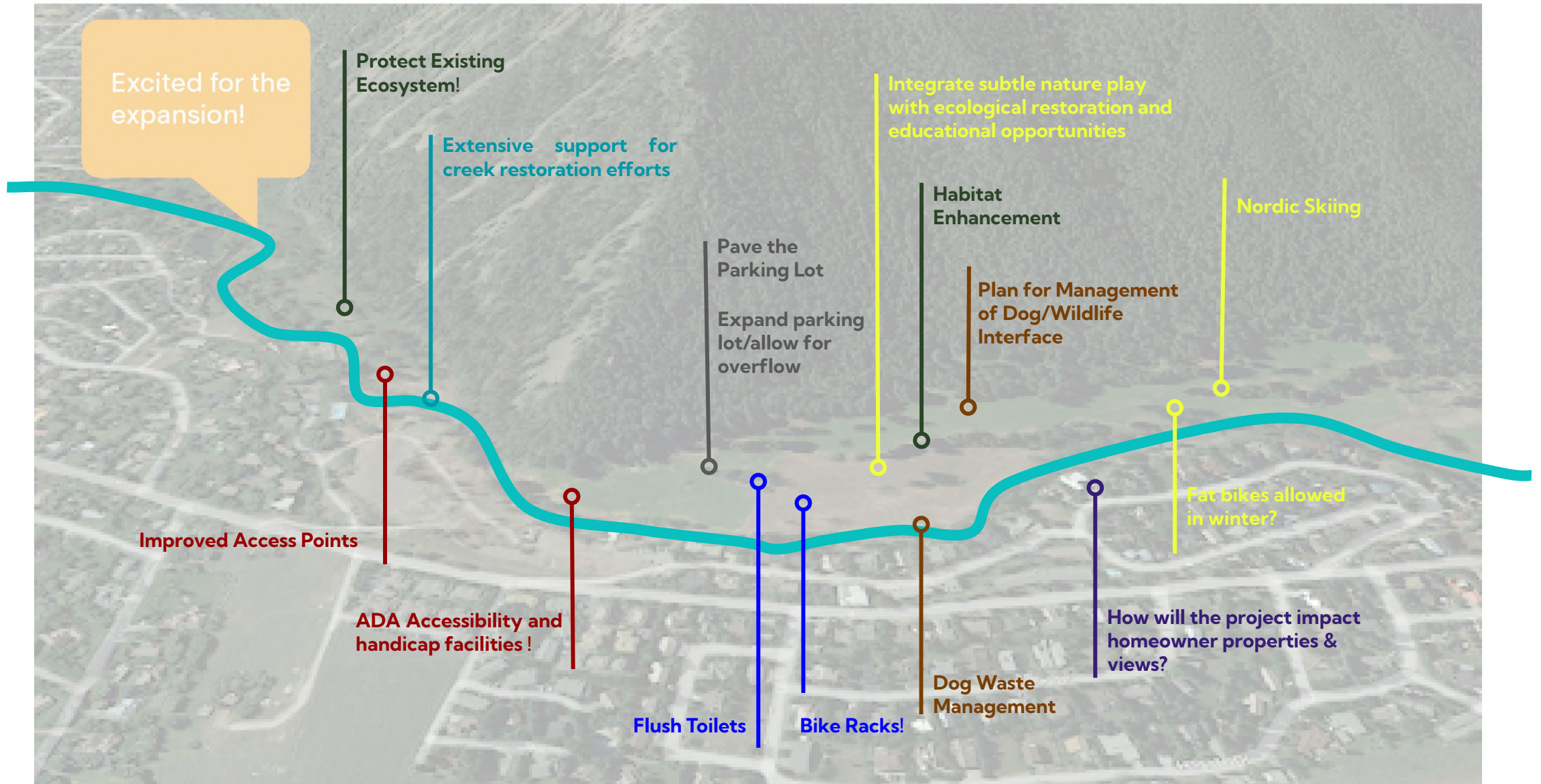
Online Survey
Public Open House #1
Joint Council P&Z Meeting #1

November
November 14
November 15

Online Survey
Public Open House #2
Joint Council P&Z Meeting #2

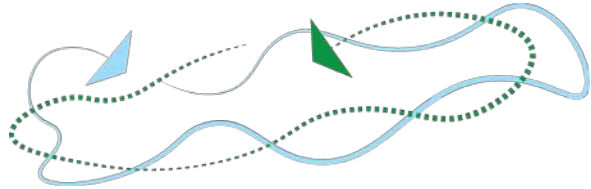


Big Picture Feedback



Project Principles

1



Create a Preserve that is
Connected and Accessible to All.

2



Design for Success over Time

3



Support All-Season
Multi-Functional Use



4

Demonstrate Leadership through
Regeneration of Healthy Ecosystems for
People, Plants & Animals

5



Restore the Creek and
Floodplain

6



Celebrate & Educate about the
Past, Present and Future of the
Preserve

Existing Project Commitments

Warranty Deed

(1) or more 10-ft w pedestrian trail for walking/skiing

(1) pump house

(1) public restroom

(1) storage building (1000sf max)

Floodplain restoration

(24) parking stalls

Community Commitments

New Irrigation System that reduces water use

Flood mitigation

Restoration of riparian zone & floodplain

Creek & Habitat Restoration

Passive park for Open Space in Perpetuity

Off-Leash Dog Access

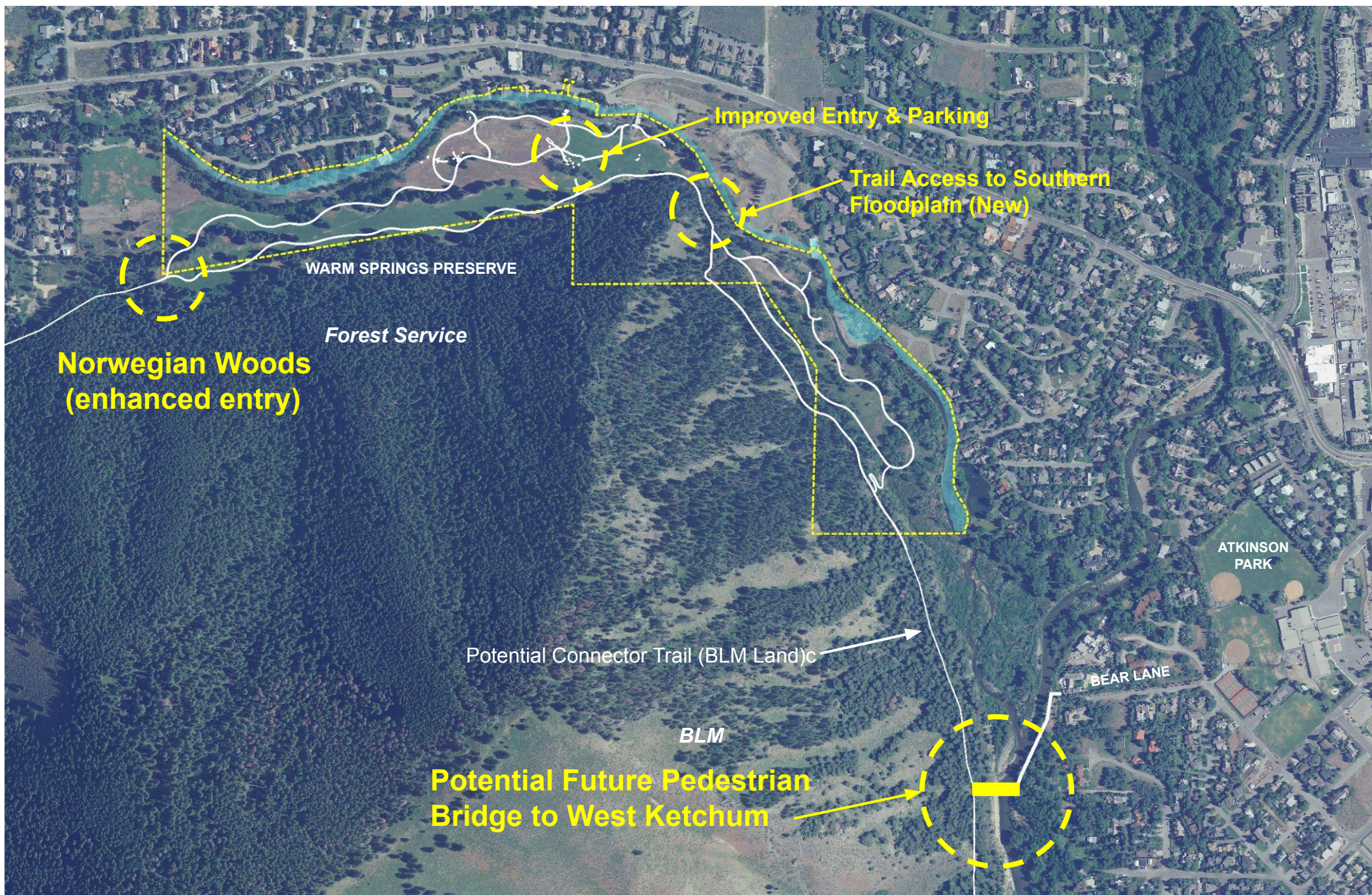
Informal Activities (disc golf, dog walking, etc.)

Informal gathering space (picnic tables, etc.)

Nordic Trails

Disc Golf

Public Restroom



WSP Areas



Opportunity Areas

- | | |
|-----------------------|----------------|
| 1 Upper Fairway | 5 The Woods |
| 2 Middle Terrace | 6 The Creek |
| 3 Lower River Edge | ★ Amenity Zone |
| 4 Southern Floodplain | |



2

Design Concepts

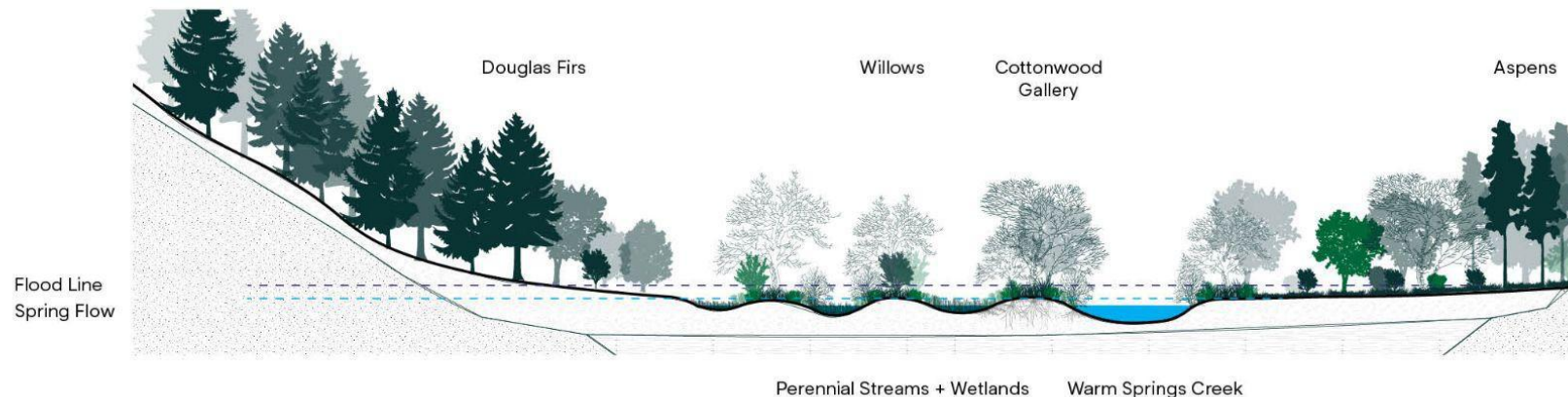
Conceptual design ideas for
restoring and preserving the
primary opportunity areas at
Warm Springs Preserve

Historic Geologic Sections

Alluvial Floodplain

Pre-1800

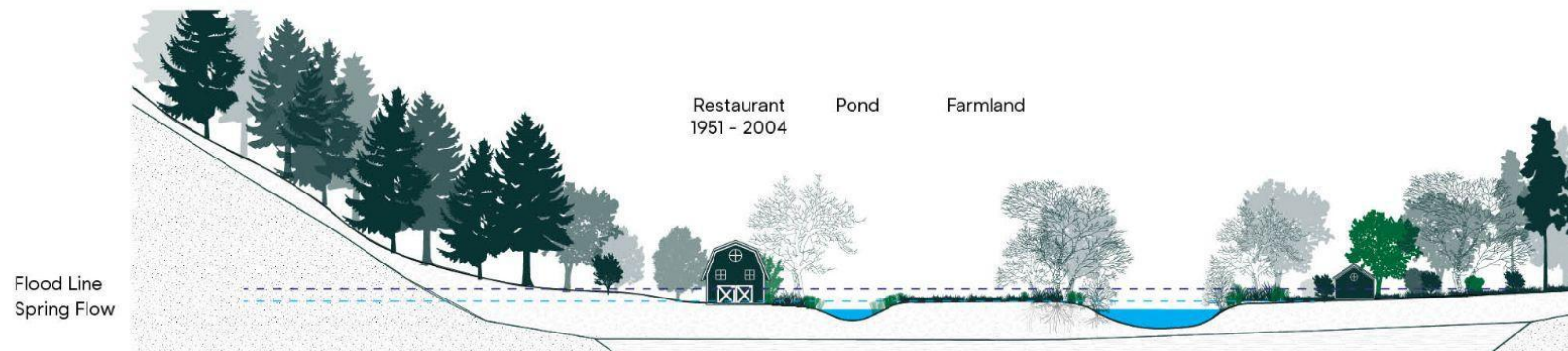
In this condition, the area where Warm Springs Preserve currently exists acted as an alluvial floodplain containing multiple meandering streams and floodable areas.



Farm + Restaurant

1800 - 1950s

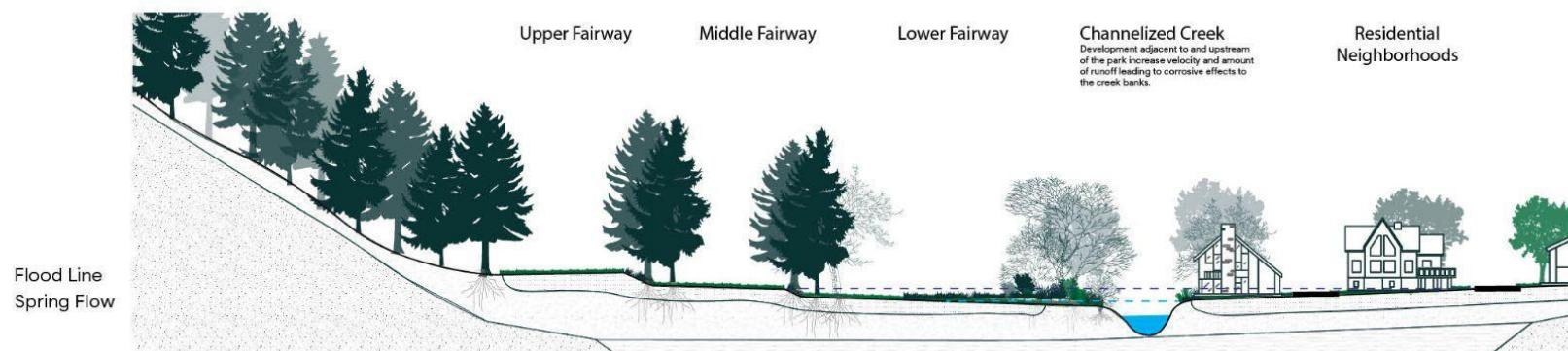
As people moved to the area and used the land for other purposes such as farming and recreation, the floodplain was lost.



Golf Course

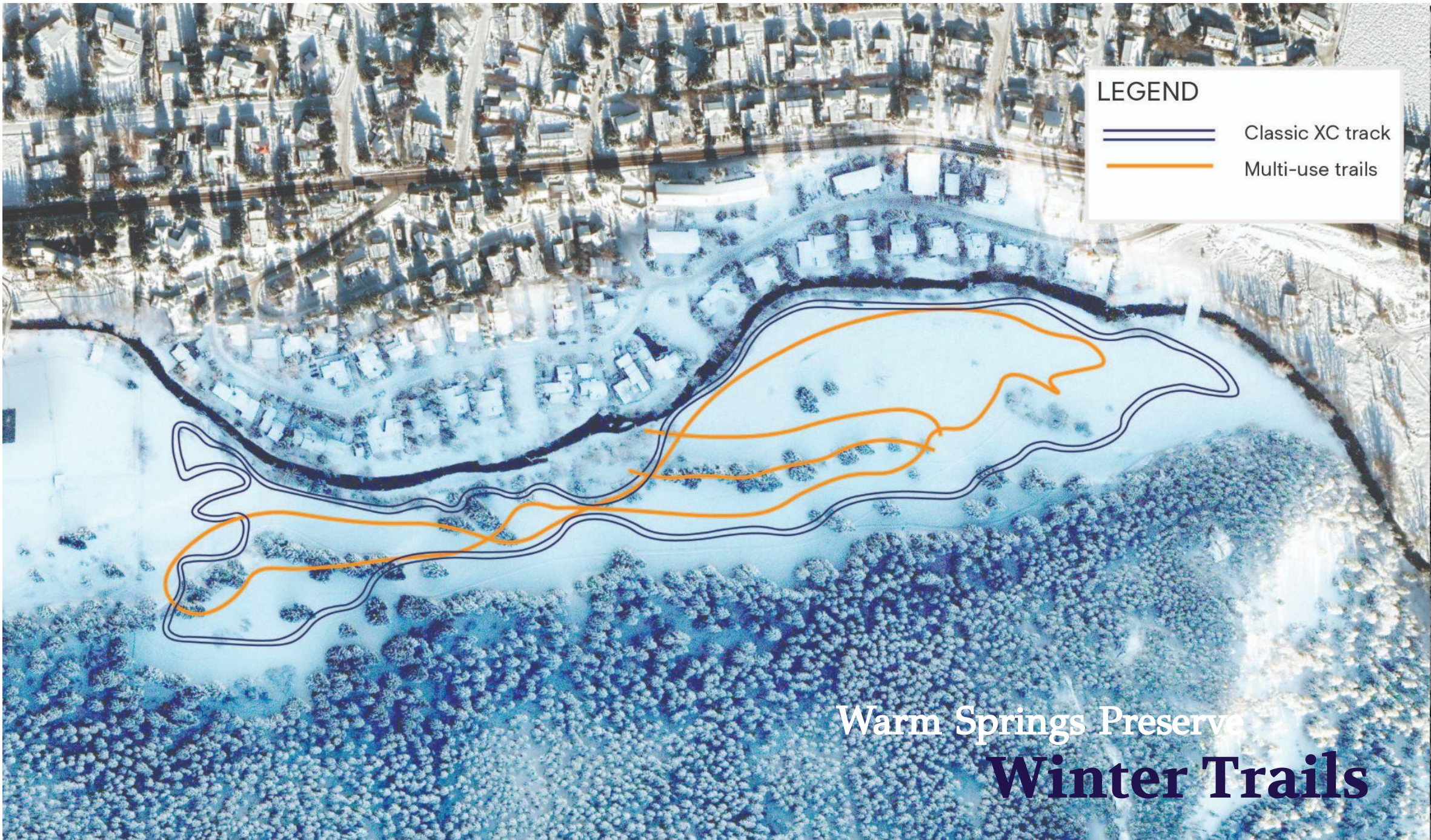
1960 - 2009

Intensified development has limited the creek's natural ability to move and flood healthily. As the development and weather patterns change, the threat to residents and the creek itself will intensify.





- 1 Upper Fairway
- 2 Middle Terrace
- 3 Lower Creek Edge
- 4 Southern Floodplain
- 5 The Woods
- 6 The Creek
- 7 Improved Parking & Facilities



Entry & Parking

ADA ACCESSIBLE
VIEWING PLATFORM

RESTORED FLOODPLAIN
(non-irrigated with native riparian plantings)

ADDITIONAL SCREENING

CULVERT

SOFT SURFACE TRAILS

CULVERT

24 PARKING SPACES,
INCLUDING 4 HANDICAP
ACCESSIBLE SPACES
(ASPHALT PAVING)

ADA
ADA
ADA
ADA

LIMITED CONCRETE PATHWAYS NEAR
HANDICAP PARKING

AVALANCHE ZONE

Improved Connector Trail to
Southern Property & Creek

Entry & Parking
Area

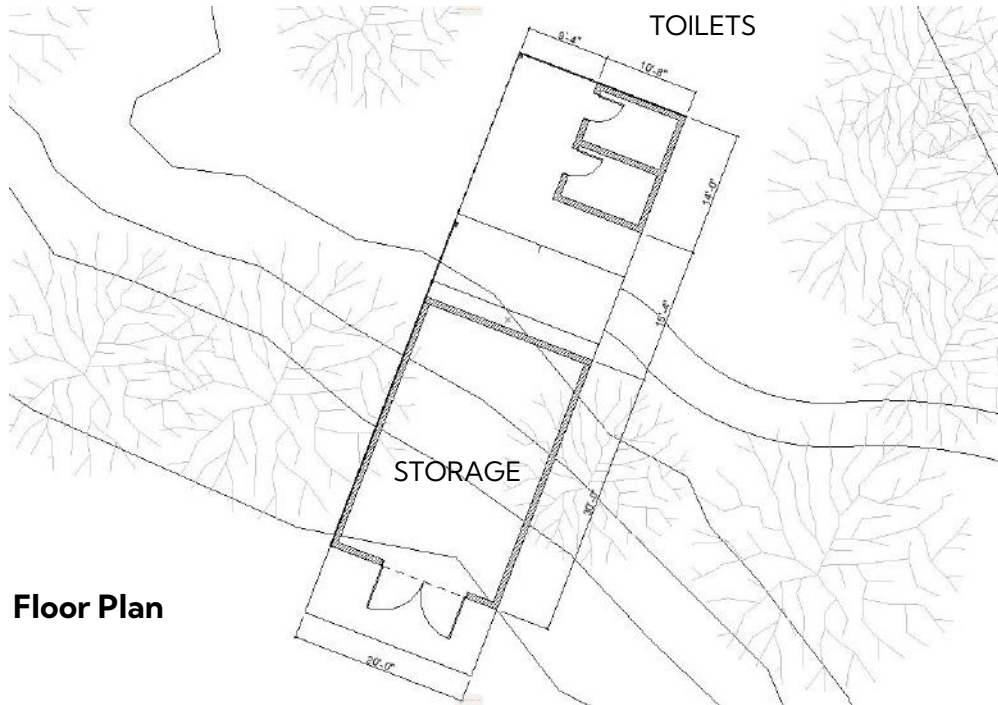


Scale - 1:20



The proposed restroom and storage building will be compact and efficient while providing needed services and facilities to support the preserve. It will include two (2) toilets for year round use, storage for maintenance, water fountains for people and dogs, waste receptacles, donor wall to recognize community supporters, a trail map, bike racks and sheltered seating. This concept provides ample screening by placing the small structure in the existing grove of trees and augmenting the grove with additional screening.

Restroom & Storage Building



Floor Plan

Restroom & Storage Building



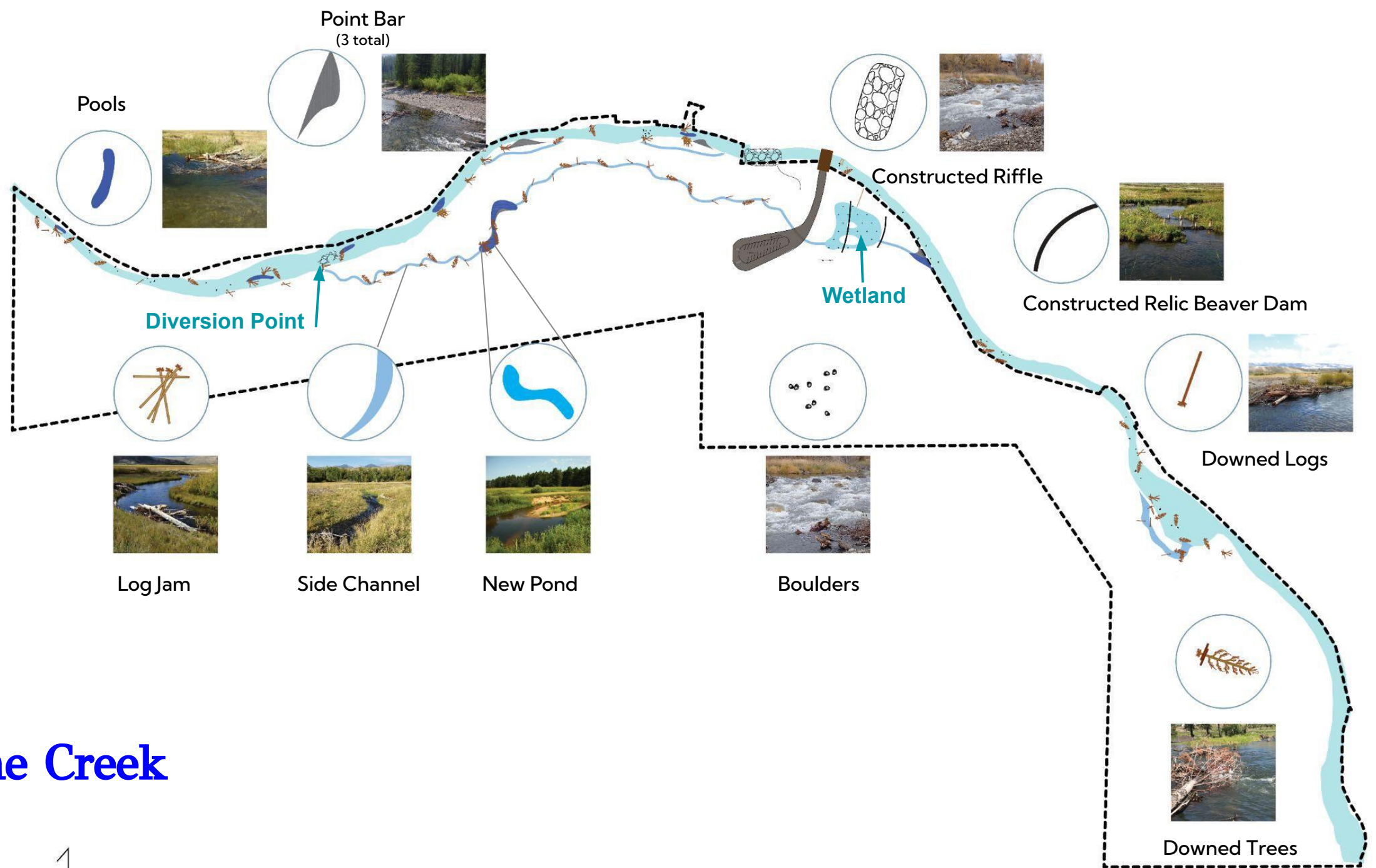
Views



Scale - 1:100

Lower Creek Edge & Restored Floodplain



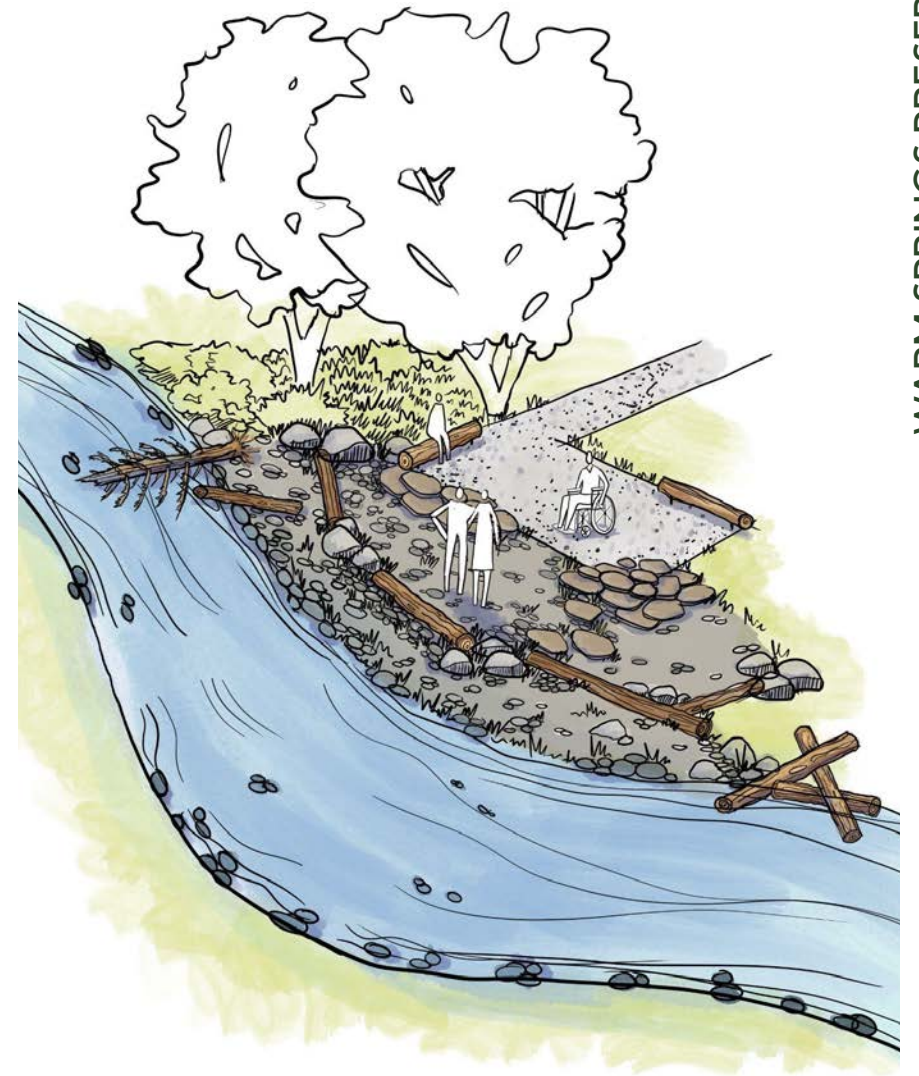


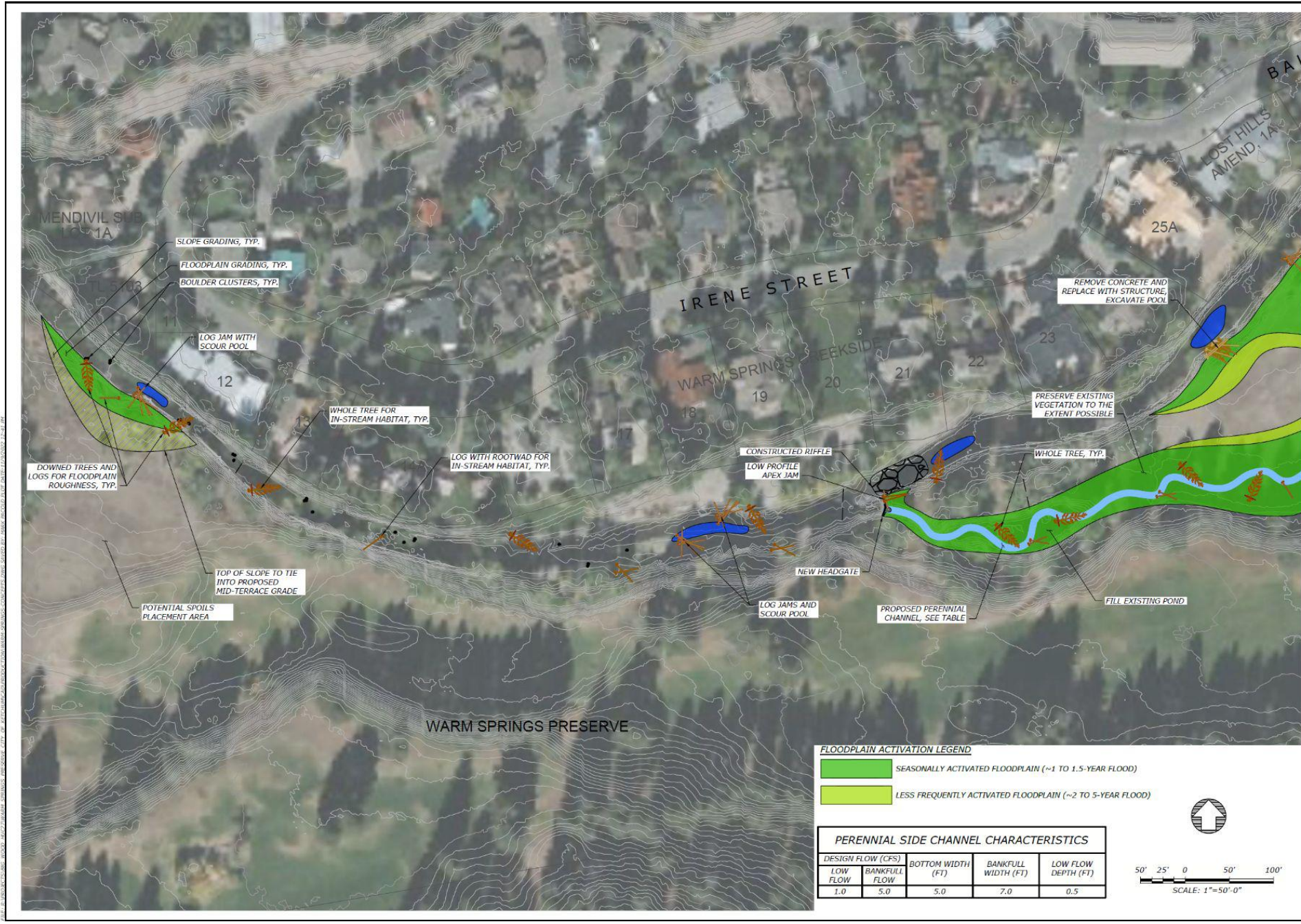
The Creek





Point Bar Creek Access





WARM SPRINGS PRESERVE

CONCEPTS

CITY OF KETCHUM
KETCHUM, BLAINE COUNTY, IDAHO

**WORKING DRAFT
NOT FOR CONSTRUCTION**

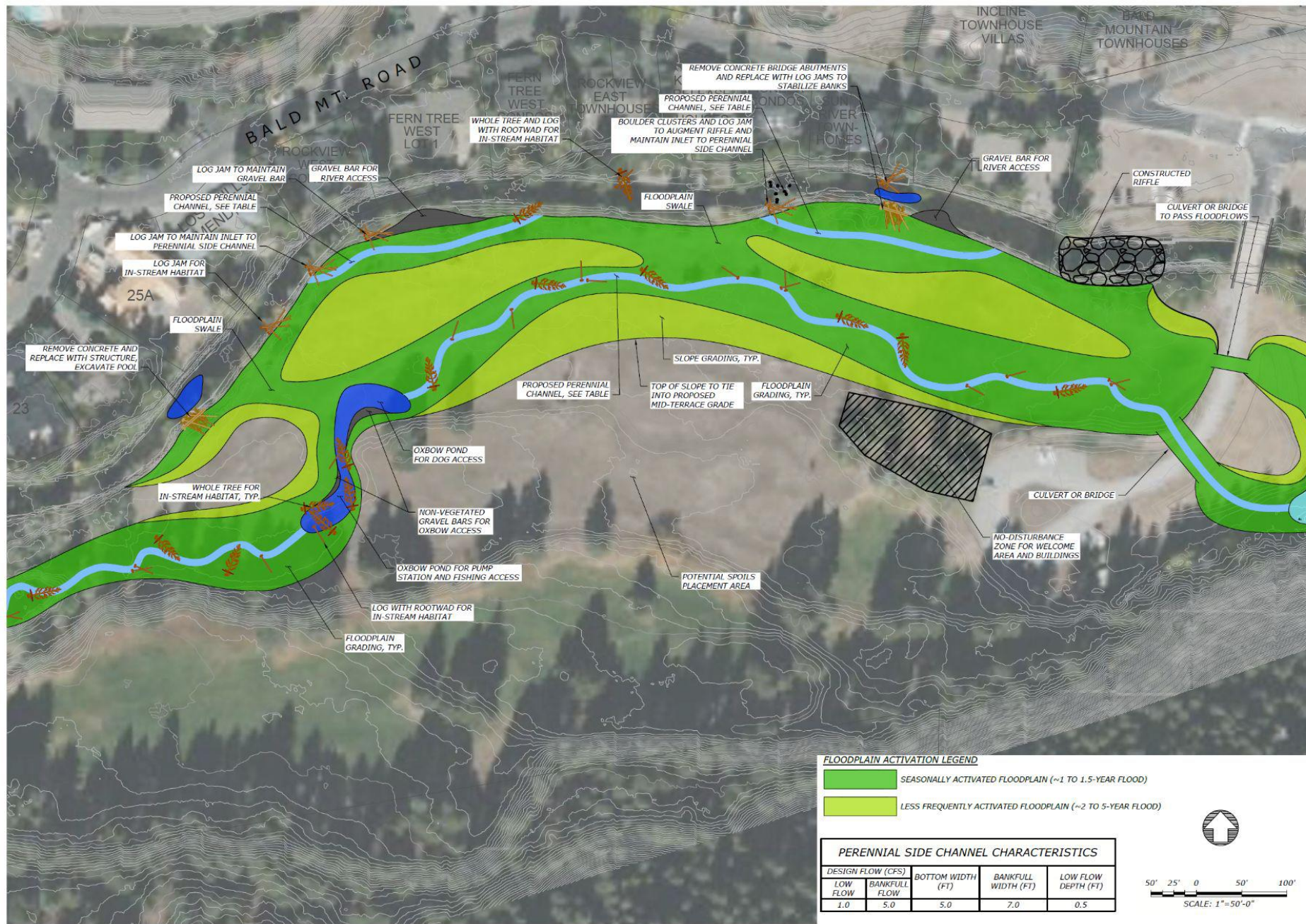
DATE: OCTOBER, 2022
DESIGNED:
APPROVED:

DRAWING NAME
CONCEPT PLANS

OVERVIEW-1

DRAWING NO.
SHEET -- OF 9

100% OF THE INFORMATION ON THIS DRAWING WAS OBTAINED FROM THE FIELD SURVEY AND/OR FROM THE RECORD DRAWINGS. THE DESIGNER HAS CONDUCTED A VISUAL CHECK OF THE INFORMATION AND HAS FOUND IT TO BE ACCURATE. THE DESIGNER HAS CONDUCTED A VISUAL CHECK OF THE INFORMATION AND HAS FOUND IT TO BE ACCURATE. THE DESIGNER HAS CONDUCTED A VISUAL CHECK OF THE INFORMATION AND HAS FOUND IT TO BE ACCURATE.



Applied Science & Engineering

WARM SPRINGS PRESERVE

CONCEPTS

CITY OF KETCHUM

KETCHUM, BLAINE COUNTY, IDAHO

**WORKING DRAFT
NOT FOR
CONSTRUCTION**

DATE: OCTOBER, 2022
DESIGNED: _____
APPROVED: _____

DRAWING NAME
CONCEPT PLANS

OVERVIEW-2

DRAWING NO. _____
SHEET -- OF 9

Constructed Side Channel, One
Year After Construction



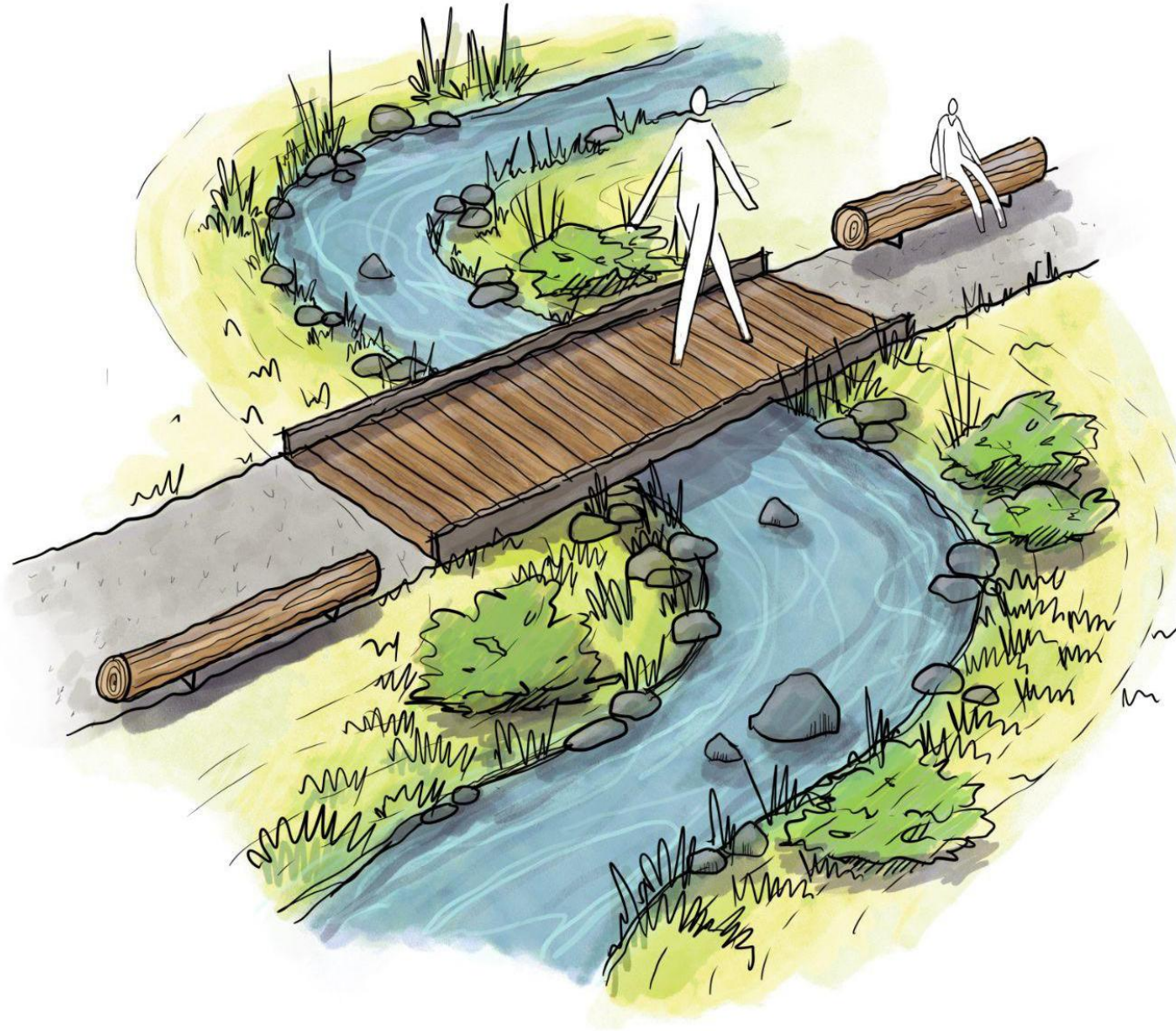
Natural Side Channel,
with Mature Vegetation



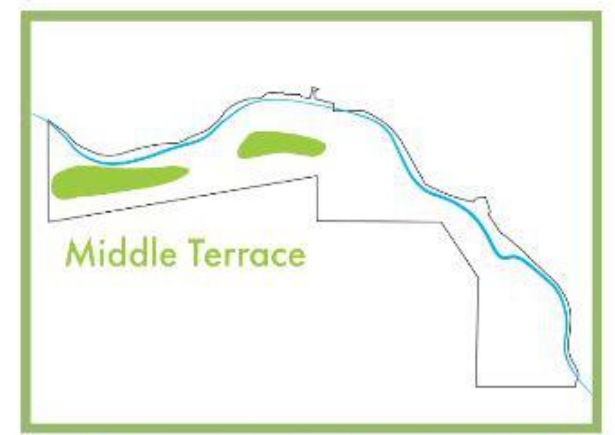


Natural Floodplain, with
Mature Vegetation
(Colorado Gulch)

Lower Creek Edge



Middle Terrace



Middle Terrace

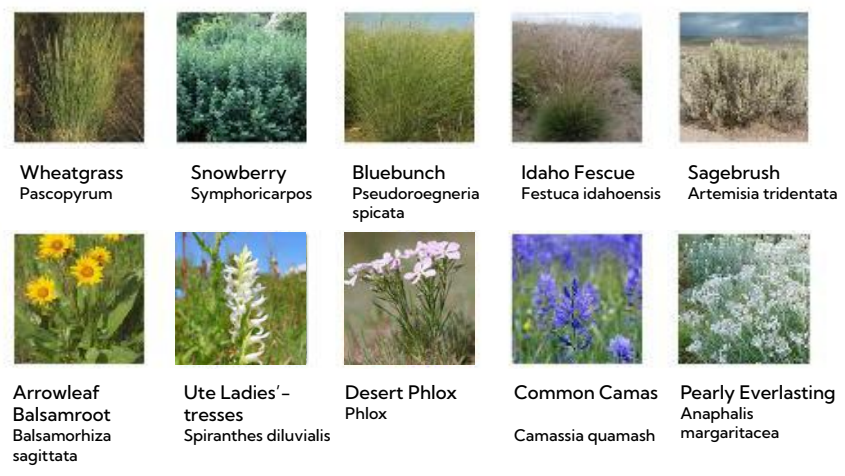
Existing Condition



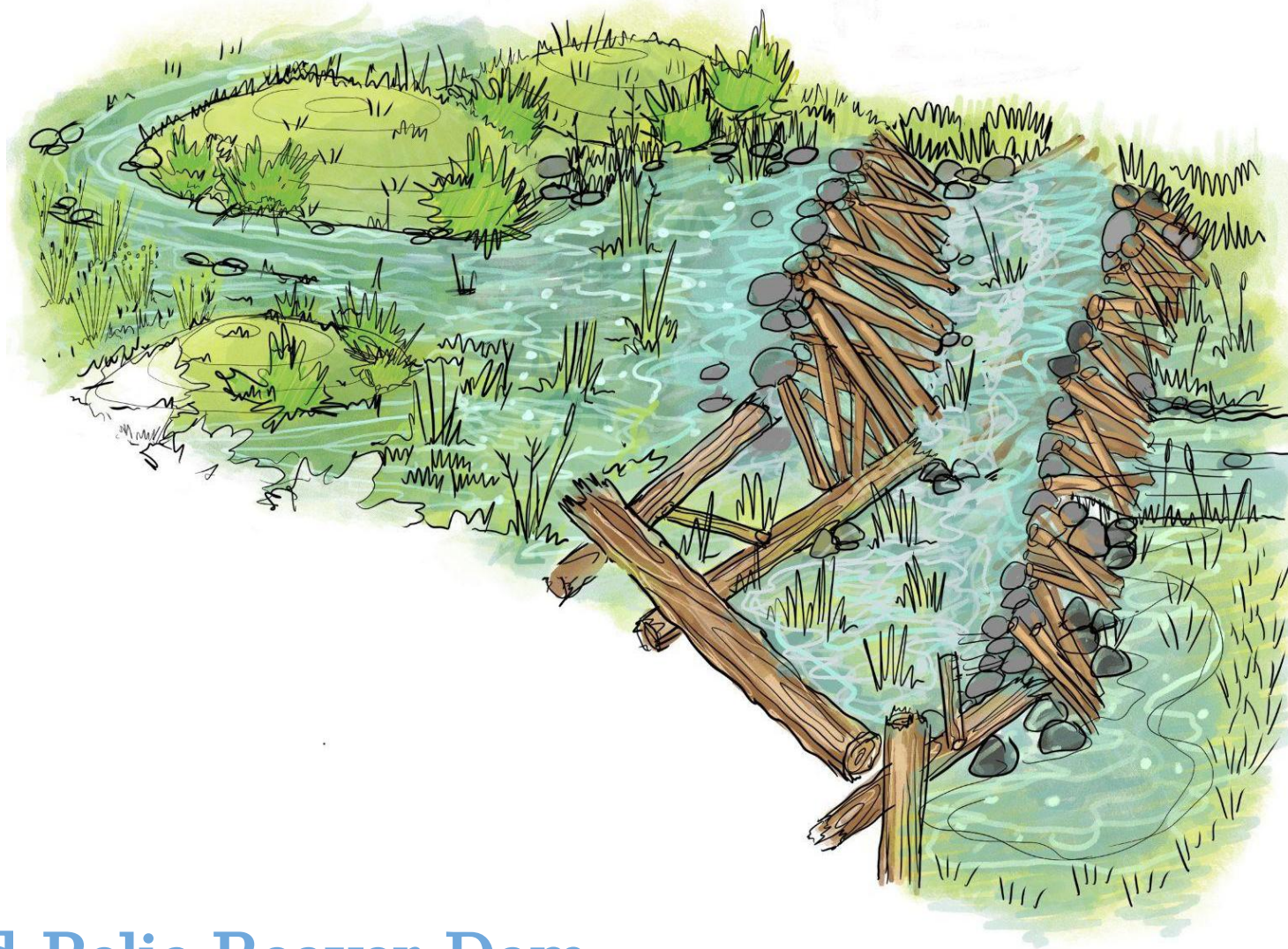
Middle Terrace



Example section showing berms with native grasses, forbs and shrubs.



Illustrative image of Middle Terrace with native meadow berms and grass pathways



Constructed Relic Beaver Dam

Natural Beaver Dam, made from
rock, soil and willow branches



Lower Creek Edge

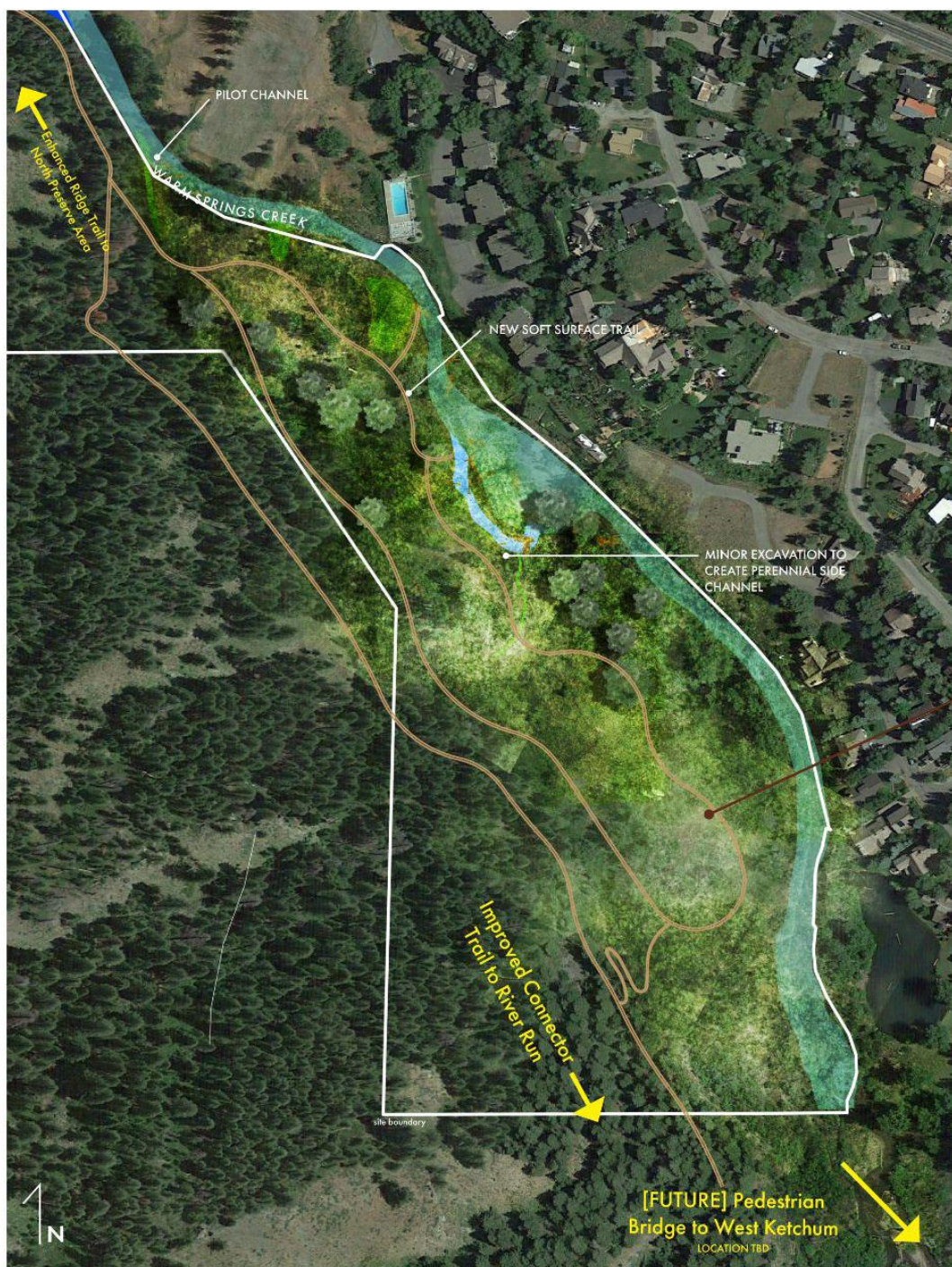
FILE: J:\PROJECTS\2022\WSP\WSP-CONCEPTS\WSP-CONCEPTS.DWG DATE: 10/10/2022 10:48 AM
PLOT: 1 OF 1
DRAWN BY: JLM
CHECKED BY: JLM
DESIGNED BY: JLM
APPROVED BY: JLM
SCALE: 1"=50'-0"



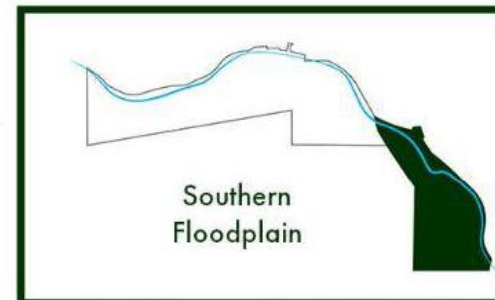
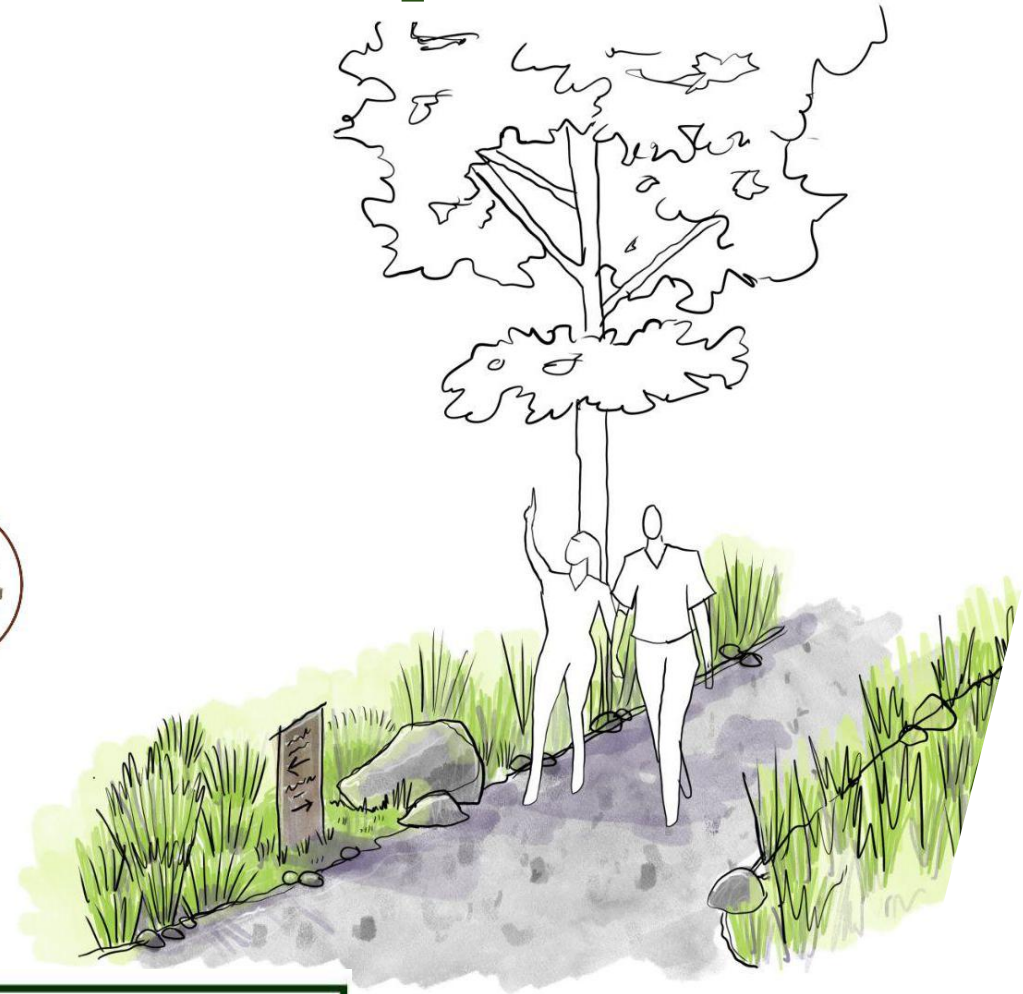
WARM SPRINGS PRESERVE
CONCEPTS
CITY OF KETCHUM
KETCHUM, BLAINE COUNTY, IDAHO

WORKING DRAFT
NOT FOR
CONSTRUCTION

DATE: OCTOBER, 2022
DESIGNED: JLM
APPROVED: JLM
DRAWING NAME
CONCEPT PLANS
OVERVIEW-4
DRAWING NO.
SHEET -- OF 9



Southern Floodplain

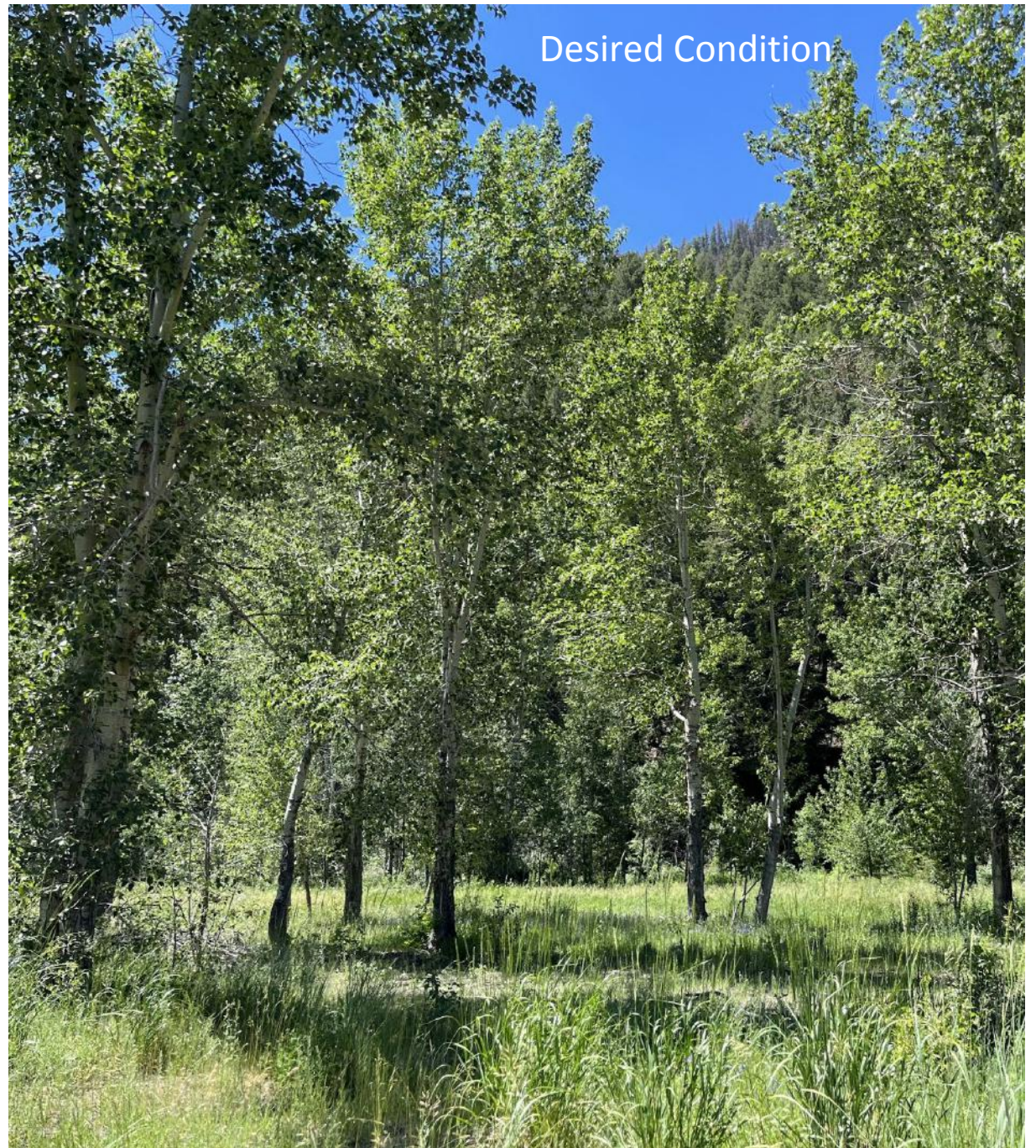


Southern Floodplain

Poor Existing Condition



Desired Condition





- 1 Upper Fairway
- 2 Middle Terrace
- 3 Lower Creek Edge
- 4 Southern Floodplain
- 5 The Woods
- 6 The Creek
- 7 Improved Parking & Facilities



3

Next Steps

The design process, permitting & implementation of the project

Next Steps



January 2023

Next Iteration of Design

- Educational/Signage
- Donor Elements

Updated Budget

Explore Phasing & Value Engineering