

Warm Springs Preserve

Opportunity Areas

Total 65-Acres

4 Southern Floodplain 15 acres 22%



- Light touch, surgical enhancements to Southern Floodplain
- Minor grading
- Pilot channel
- Soft surface pathways



Project Partners



WOOD RIVER LAND TRUST

Design Team

SUPERBLOOM



ECOSYSTEM SCIENCES, LLC



6 Warm Springs Creek

- improved irrigation diversion
- instream habitat & pools

6 acres
9%

1 Upper Fairway 8 acres 12%



- Maintain upper terrace fairway
- Replace inefficient irrigation system
- Opportunities for benches & picnic tables
- Maintain lawn with some restored edges
- Potential for dog waste receptacles



2 Middle Terrace 9 acres 14%



- Potential for seasonal native wildflower meadow
- Enhanced biodiversity & pollinator species
- Non-irrigated
- Mown pathways



3 Lower Creek Edge 8 acres 13%



- Possibly extensive grading & earthworks
- 2-3 inlets connecting to creek
- Gravel islands and bars
- Low water crossings for ephemeral channels
- Small bridges for year-round flows
- Expanded tree canopy



WARM SPRINGS PRESERVE Master Plan Process

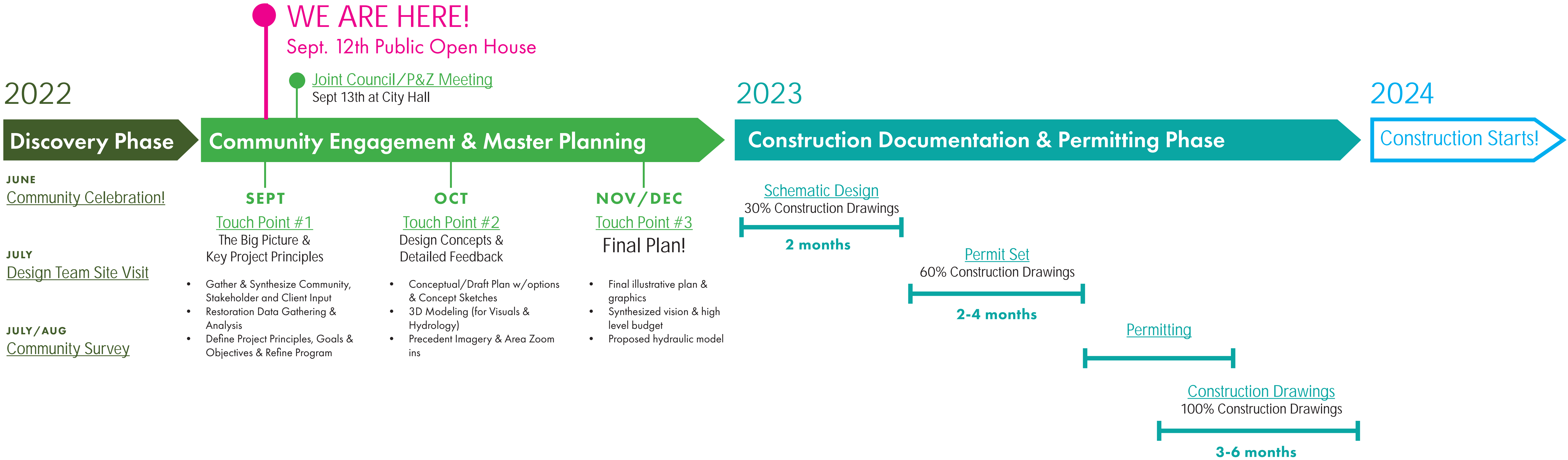


Vision

Public Meetings

Design + Planning

Action



Project Partners



City of Ketchum



Wood River Land Trust



Friends of Warm Springs Preserve Committee

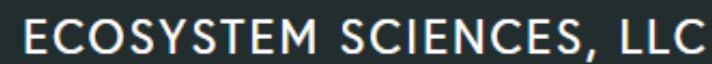
Design Team



Superbloom
Team Lead, Community Engagement, Landscape Architecture



Rio Applied Science & Engineering
Engineering, Geomorphology, Hydrology



Ecosystem Sciences
Ecological Systems

WARM SPRINGS PRESERVE

Principles & Framework



Existing Project Commitments

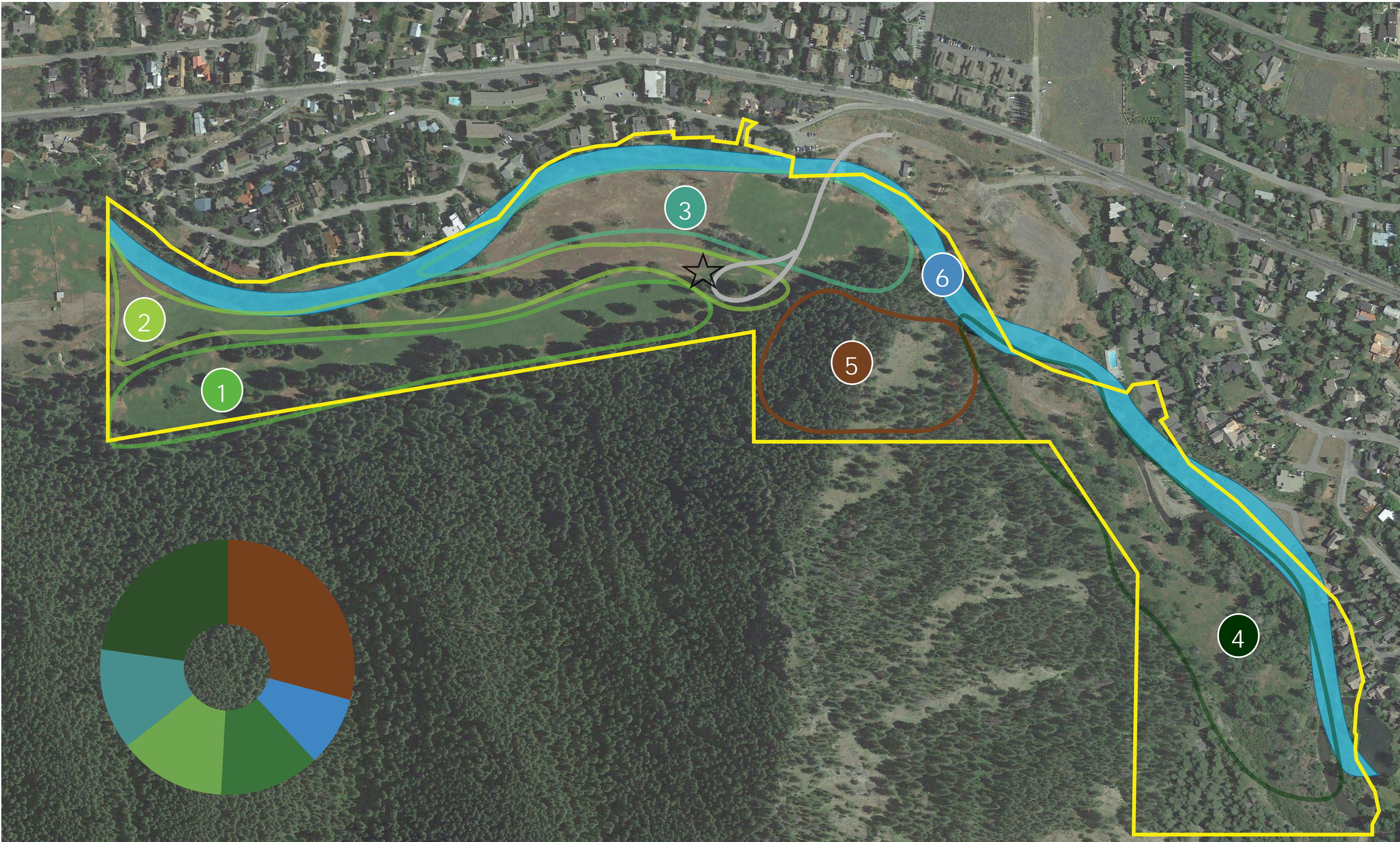
Warranty Deed (required)

- Floodplain restoration
- (1 or more) 10-ft w pedestrian trail for walking/skiing
- (1) irrigation pump house
- (1) public restroom
- (1) maintenance shed (1000sf max)
- (24) parking stalls

Community Commitments

- New irrigation system that reduces water use
- Flood mitigation
- Restoration of riparian zones & floodplain
- Creek & habitat restoration
- Passive park for open space in perpetuity
- Off-leash dog access
- Informal activities (disc golf, dog walking, etc.)
- Informal gather space (picnic tables, etc.)
- Nordic trails
- Public restroom

Initial Concept: Opportunity Areas



Opportunity Areas

- | | |
|-----------------------|----------------|
| 1 Upper Fairway | 5 The Woods |
| 2 Middle Terrace | 6 The Creek |
| 3 Lower River Edge | ★ Amenity Zone |
| 4 Southern Floodplain | |

Six Guiding Principles

- 01** Create a Preserve that is Connected and Accessible to All
- 02** Design for Success over Time
- 03** Support All-Season Multi-Functional Use
- 04** Demonstrate Leadership through regeneration of Healthy Ecosystems for People, Plants & Animals
- 05** Restore the Creek & Floodplain
- 06** Celebrate & Educate about the Past, Present and Future

WARM SPRINGS PRESERVE Restoration 101

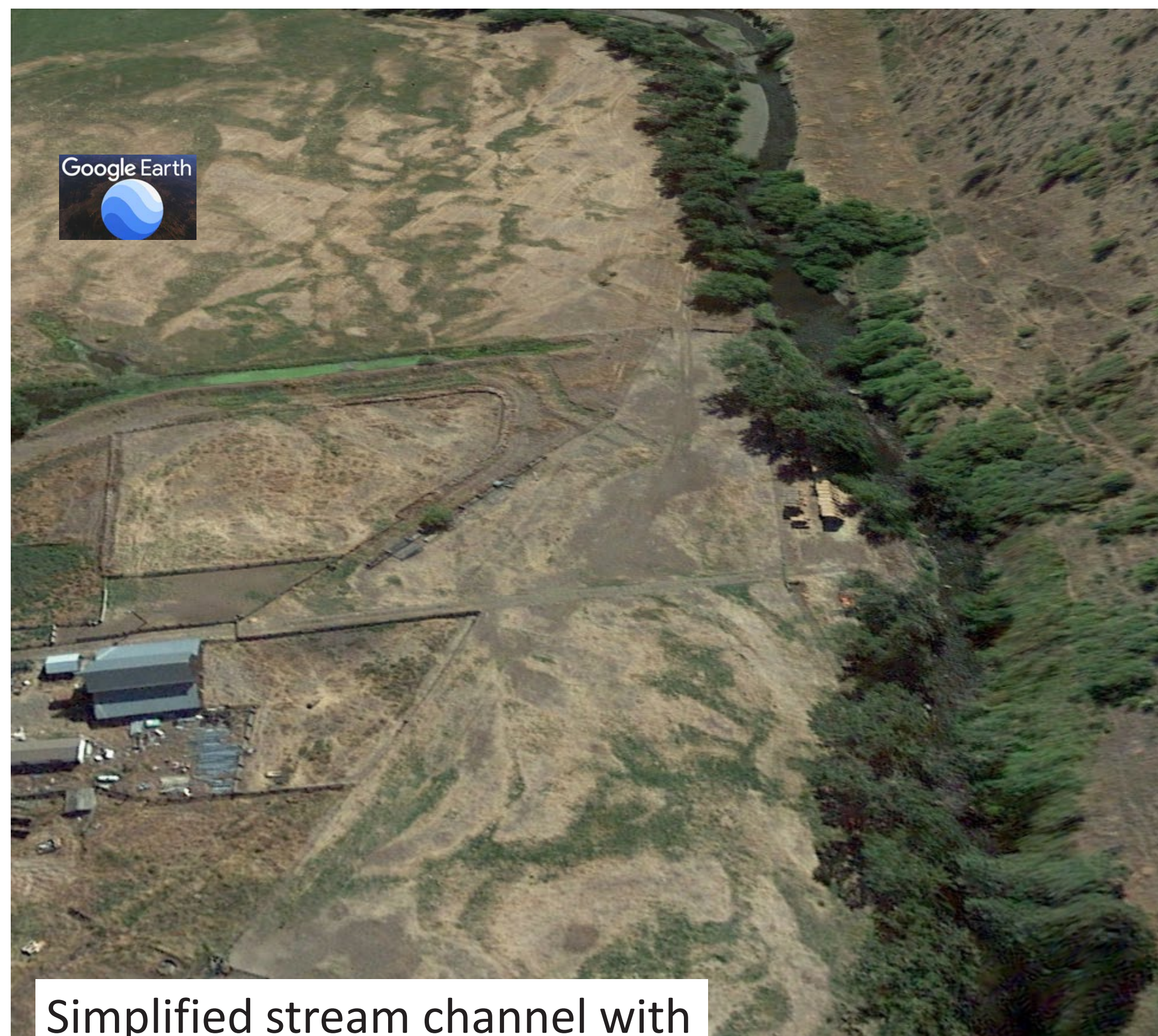
Example: Catherine Creek, OR



before

during

after



Simplified stream channel with
no floodplain connection

Complex stream channel with
good floodplain connection



Create a Preserve that is Connected and Accessible to All

Where can access be enhanced?

The proposed improved connections on the map below expand the usable park from **29 acres to 65 acres!**

PLACE A DOT ON TOP TWO (2) CONNECTIONS
THAT YOU WANT TO SEE IMPROVED.





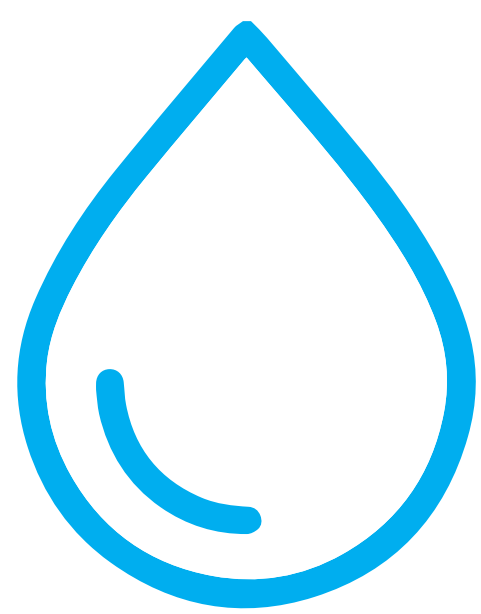
Design for Success Over Time

The vision imagines a Preserve that is self-sustaining and resilient. How will we measure success?

PLACE A DOT ON THE METRICS OF
SUCCESS THAT YOU THINK ARE MOST IMPORTANT

Water Efficiency

Reduce managed water consumption
(target reduction % or gal/acre)



Stream Restoration

Increase acres of floodplain connectivity,
#/size/depth of pools,
observed species richness
(wildlife + vegetation)

Hazard + Flood Safety

Reduce frequency and extent of flooding in residential areas; reduce water speed, and bank erosion

Visitor Experience

Increase access, usage, and activity types
(access for all)



Support All-Season Multi-Functional Uses

The activities below are allowed by the warranty deed.

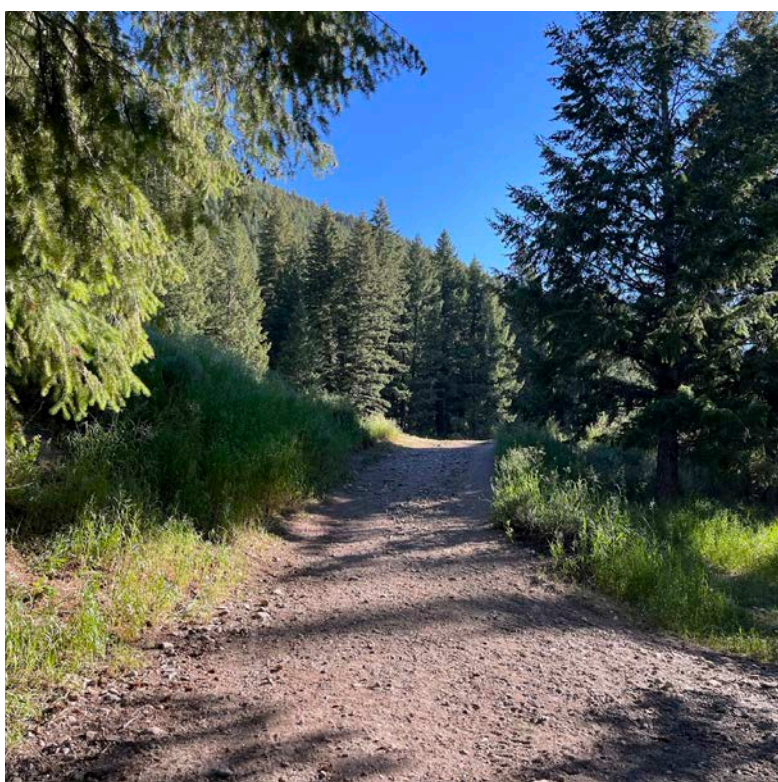
PLACE A DOT ON THE TOP THREE (3) ACTIVITIES YOU
WANT TO SEE IMPROVED AT THE PRESERVE



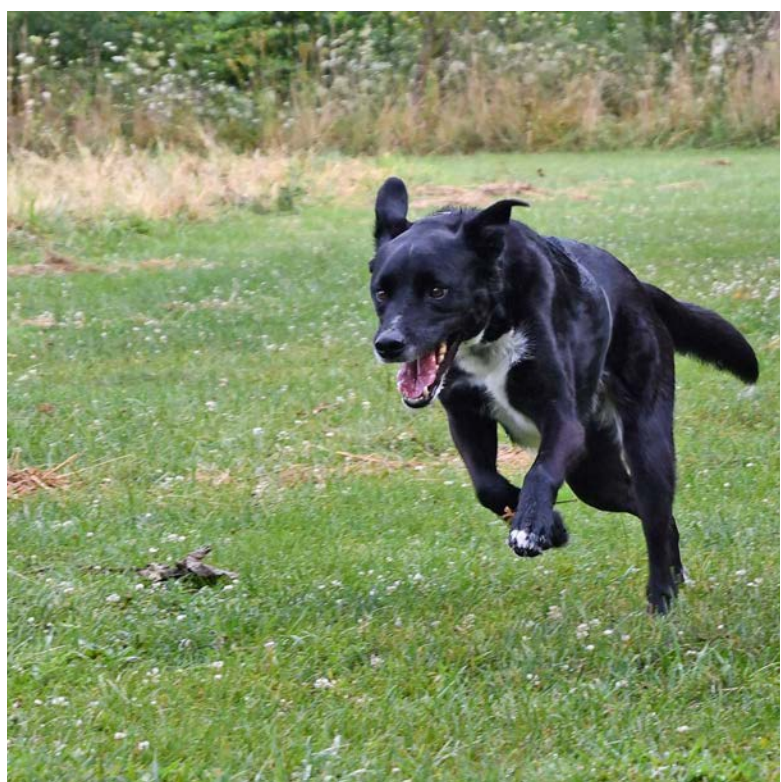
Creek and Habitat
Restoration



Boardwalk Path



ADA Walking Trails



Off-Leash Dog
Walking



Interpretive Signage



Disc Golf



Benches



Picnic Areas



River Access



Groomed Nordic
Trails



Snowshoe
Trails



Fishing

NOT PERMITTED: Camping, Open Fires, Biking, Organized Sports, Reserved Private or Commercial Events, Motorized Equipment and Vehicles, Parking Outside of Designated Areas



Demonstrate Leadership by Regenerating Healthy Ecosystems for People, Plants & Animals

Best practices for a nature preserve

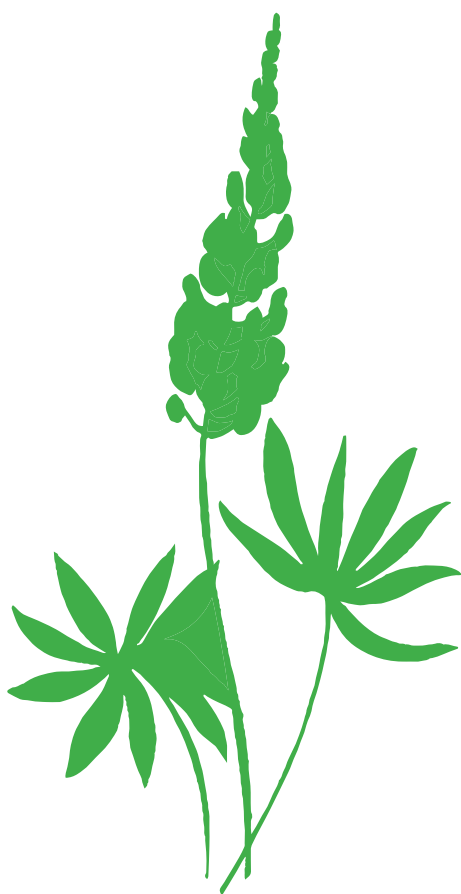
Ecological

- Improve stream function
- Improve fish and wildlife habitat
- Dissipate flood risk
- Reduce stream energy
- Potential water savings
- Improve riparian shade and aesthetics
- Increase biodiversity & native plants

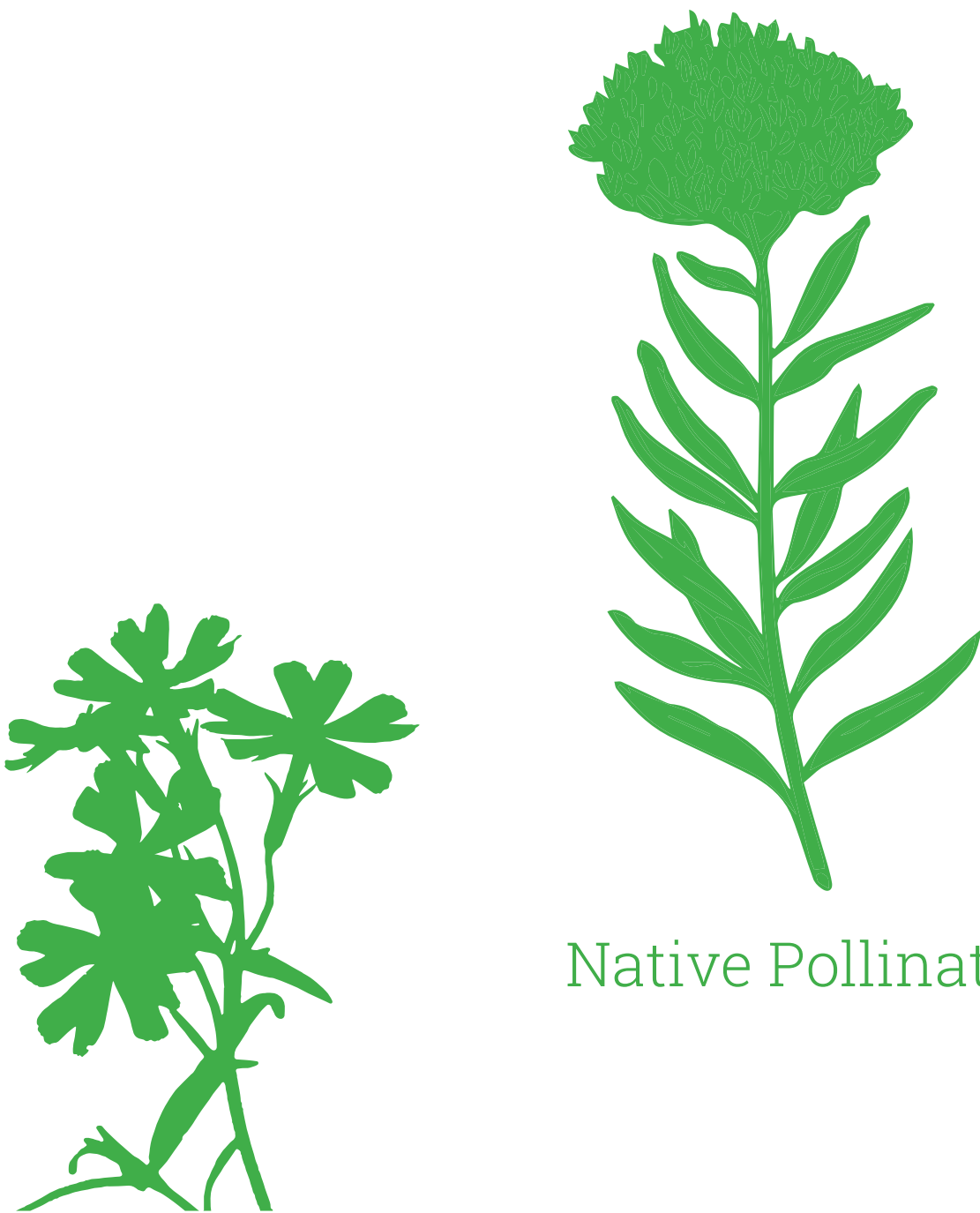


Rainbow Trout

Bald Eagle



Lupine



Desert Phlox

Native Pollinators



Great Horned Owl

Logistical

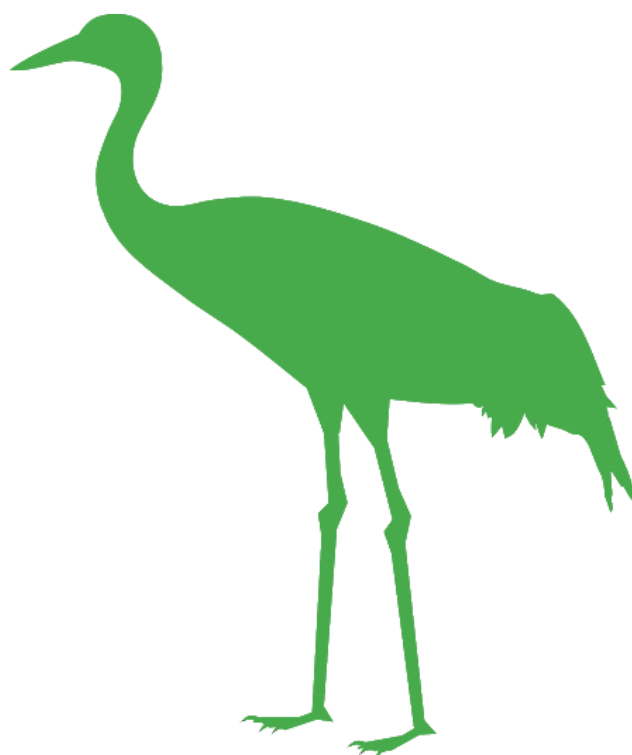
- Stakeholder feedback
- Community commitments
- Improve funding opportunities
- Reduce maintenance costs
- Reduce water use for irrigation



Hummingbird

Human

- Safety and hazard reduction
- Therapeutic & Relaxing
- Increased shade
- Aesthetics
- Activities like fishing

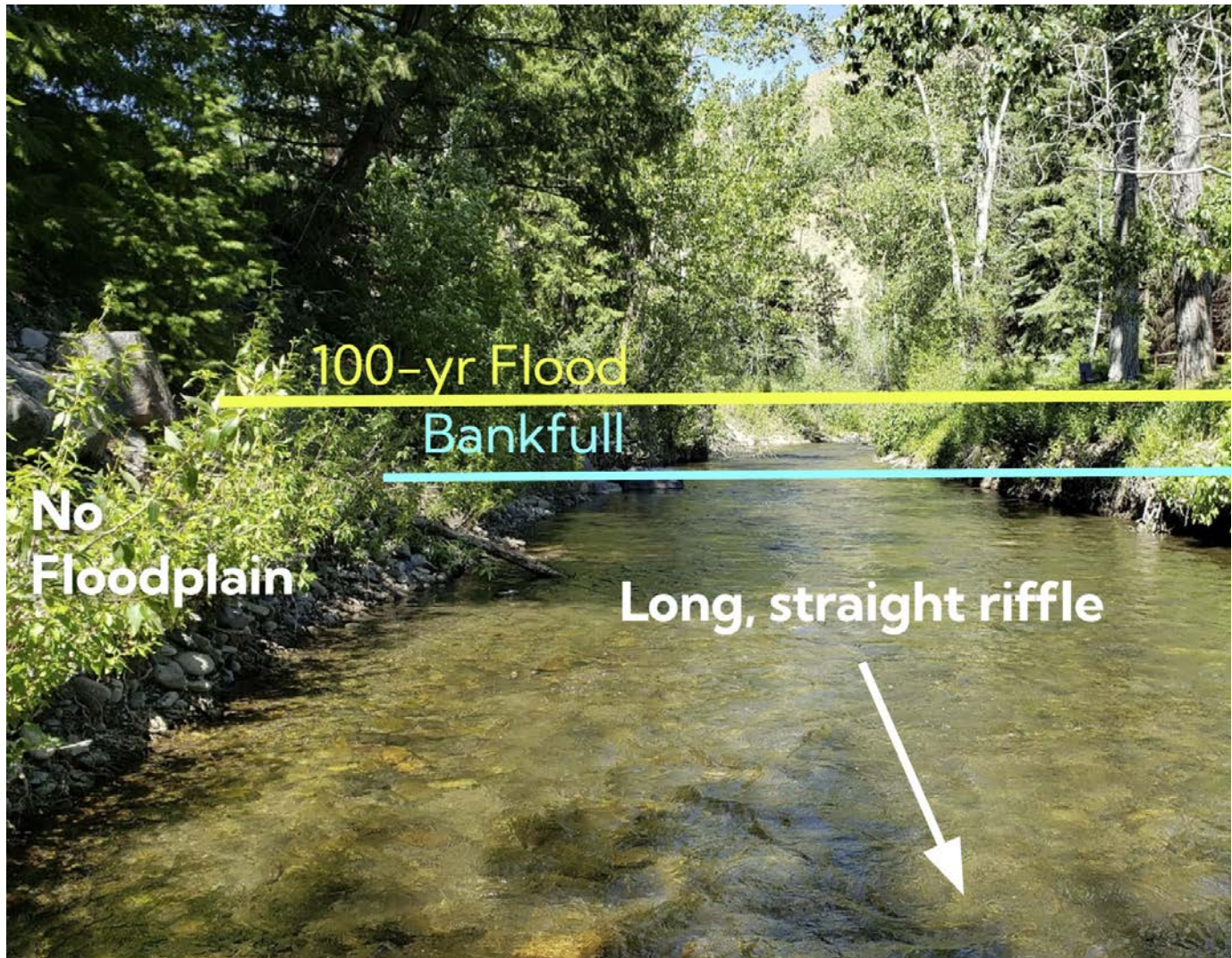


Sandhill Crane



Arrow-Leaf Balsam Root

Restore the Creek & Floodplain



Greater floodplain connection

Improved habitat and reduced flood risk to adjacent neighborhoods



Improved fish habitat

More pools and cover in the creek and off-channel areas for fish rearing (e.g. side channels)



Reduced water usage

Improve irrigation diversion, pond, and associated water use efficiency to preserve in-stream water for all downstream reaches



Native riparian vegetation

Provides shade and nutrient cycling, cover and habitat; fewer weeds



Natural spaces

Unique opportunity to preserve and enhance natural habitat



Tree canopy

Added tree coverage in zones 2 & 3 for shade and cooling effect



Celebrate & Educate about the Past, Present and Future of the Preserve

PLACE A DOT ON THE TOP THREE (3) CULTURAL AND EDUCATIONAL FEATURES THAT YOU WOULD LIKE TO SEE RECOGNIZED AT THE PRESERVE

Interpretive Trail

Native American History

Climate Change Impacts

Wildlife

Early Settlers

Creek Ecology

Plant Biodiversity

Regional Water Issues

Trout Habitat

Site History

Healthy Stream

golf course

development

creek modification

community fundraising

Drought Tolerant Landscapes

FUN FACT

Naturalized floodplains
dissipate flood energy
and naturally protect
adjacent infrastructure.



Warm Springs Preserve

FUN FACT

Warm Springs Preserve
is the last opportunity
for large-scale habitat
restoration in lower
Warm Springs Creek.



Warm Springs Preserve

FUN FACT

TROUT love a healthy creek.

Densities are 8-10 times higher in healthy creek habitat that includes large woody debris & a healthy riparian zone compared to habitat with rip-rap (large exposed rock).



Warm Springs Preserve

FUN FACT

Did you know that
currently WSP uses 80%
more water per acre than the
ballfields at Atkinson Park?

In July 2022:

Atkinson Park:	Warm Springs Preserve:
9.5 acres @ 1.25mil gal	10.5 acres @ 2.5mil gal



Warm Springs Preserve

FUN FACT

We want to thank YOU!
With over 1,000 donations
ranging from \$7 to \$1 million, this
project is possible only through
your amazing community support!



Warm Springs Preserve

FUN FACT

Reconnecting the creek
to the floodplain will
alleviate flooding, reduce
irrigation needs and
benefit fish and wildlife.



Warm Springs Preserve

FUN FACT

Providing access to the south side of the Preserve unlocks an additional 36 acres of additional land for passive recreation. That is more than double what is accessible today.

Warm Springs Preserve

FUN FACT

The existing irrigation system is extremely old and inefficient, requiring numerous costly repairs this summer alone. The outdated system also requires watering the lawn during the day - the worst, most wasteful time to water!



Warm Springs Preserve