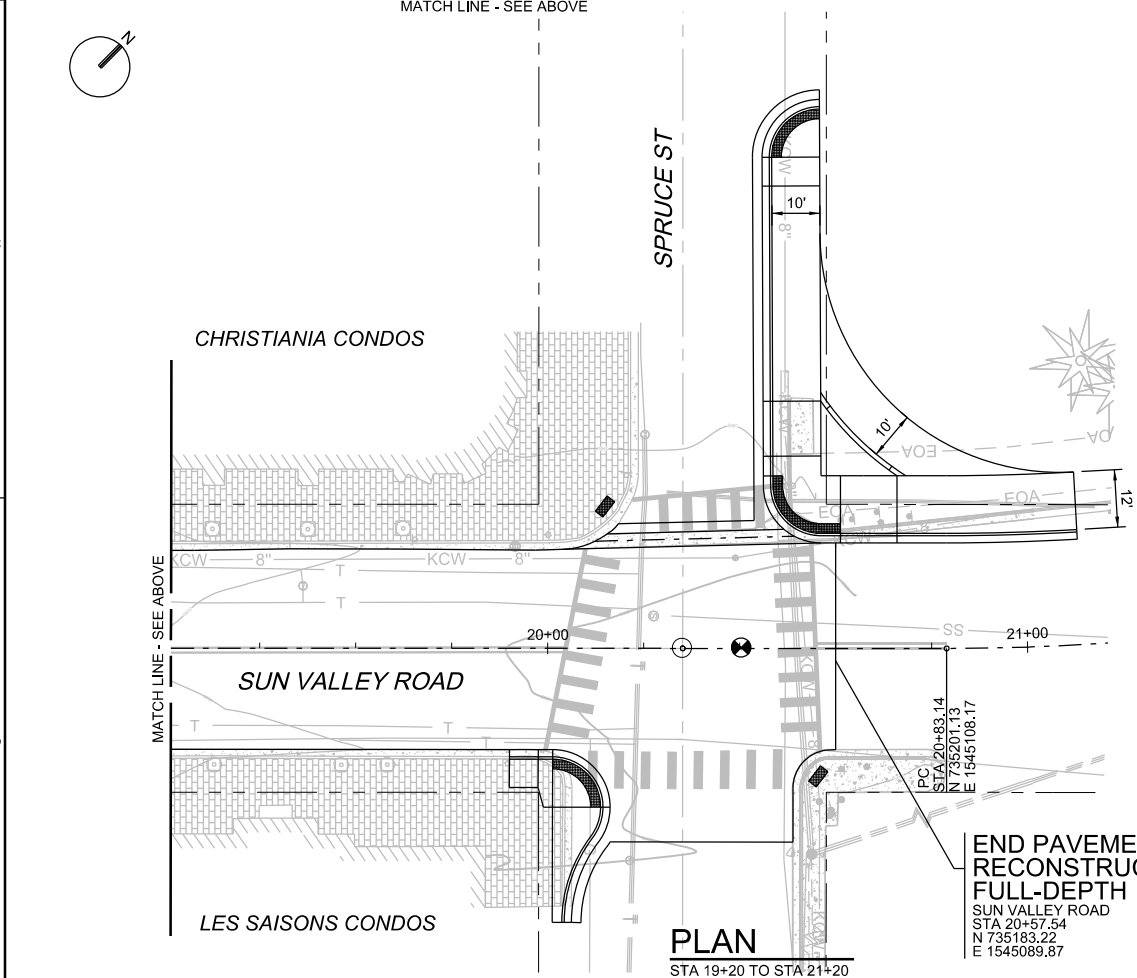


PLAN
STA 14+80 TO STA 19+20



PLAN
STA 19+20 TO STA 21+20

END PAVEMENT
RECONSTRUCTION
FULL-DEPTH
SUN VALLEY ROAD
STA 20+57.54
N 735°183.22
E 1545°089.87

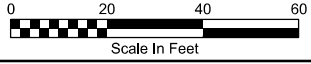
- SHEET KEYNOTES**
- 53. RETAIN AND PROTECT CATCH BASIN, REPLACE GRATE WITH SOLID LID AND TO GRADE SEE KETCHUM STANDARD DRAWING 11
 - 54. CONSTRUCT 6" VERTICAL CURB AND GUTTER, SEE KETCHUM STANDARD DRAWING 4
 - 55. RETAIN AND PROTECT DRY WELL, RAISE LID TO GRADE, SEE KETCHUM STANDARD DRAWING 10
 - 56. CONSTRUCT VALLEY GUTTER, SEE KETCHUM STANDARD DRAWING 5
 - 57. SAWCUT, DEMOLISH, REMOVE AND REPLACE 2' ASPHALT PAVEMENT TO APPROXIMATE LIMITS SHOWN AND AS REQUIRED TO PROVIDE NEW WORK
 - 59. CONSTRUCT NEW ASPHALT PAVEMENT PER SECTION AS SHOWN ON SHEET TS-301
 - 69. INSTALL NEW SIGN POST BASE. SIGN POST BASE TO BE PROVIDED BY CITY OF KETCHUM. SEE KETCHUM STANDARD DRAWING 13
 - 70. CONSTRUCT 1' WIDE CONCRETE VERTICAL 6" CURB
 - 71. CONSTRUCT 3" ROLLED CURB AND GUTTER SEE ISPWC SD-702
 - 74. INSTALL 12" RCP STORM DRAIN PIPE

GENERAL NOTES

- 1. CONTRACTOR WORK LIMITS SHALL BE WITHIN PUBLIC RIGHT-OF-WAY OR TEMPORARY CONSTRUCTION EASEMENTS.
- 2. CONTRACTOR SHALL LOCATE AND FIELD VERIFY ALL UTILITIES AND SNOWMENT SYSTEMS PRIOR TO BEGINNING WORK AND ADJUST ALL UTILITY STRUCTURES AND SNOWMELT SYSTEMS TO MATCH PROPOSED GRADES.
- 3. EXISTING SITE FEATURES SHOWN WERE OBTAINED FROM SURVEYS COMPLETED BY GALENA ENGINEERING INC. IN OCTOBER 2021. CONTRACTOR SHALL VERIFY INFORMATION PRIOR TO BEGINNING WORK. SURVEY CONTROL INFORMATION IS SHOWN ON G-003. RETAIN AND PROTECT ALL UTILITIES NOT SCHEDULED FOR DEMOLITION.
- 4. SEE G-2 FOR GENERAL NOTES, LEGEND, AND ABBREVIATIONS.
- 5. SEE TS-301 FOR TYPICAL ROADWAY SECTION INFORMATION.
- 6. SEE C-400 SHEETS FOR RAMP AND SIDEWALK GRADING INFORMATION.
- 7. PROVIDE PERMANENT PAVEMENT MARKINGS ON ENTIRE NEW ROADWAY SURFACE TO MATCH PAVEMENT MARKINGS ON EXISTING PORTION OF SUN VALLEY ROAD, SEE DRAWING SN102.
- 8. CONTRACTOR SHALL LOCATE AND FIELD VERIFY ALL STORM DRAIN SYSTEMS PRIOR TO BEGINNING WORK AND SHALL COORDINATE WITH ENGINEER ANY DIFFERENCES IN THE PLANS AND WHAT IS DISCOVERED IN THE FIELD.

SHEET KEYNOTES

- 1. RETAIN AND PROTECT
- 4. SAWCUT, DEMOLISH AND REMOVE CONCRETE CURB AND GUTTER
- 5. SALVAGE SIGN AND POST, FOR REINSTALLATION, DEMOLISH FOUNDATION
- 6. REINSTALL SIGN AND POST WITH NEW FOUNDATION, SEE KETCHUM STANDARD DRAWING 13
- 7. SALVAGE RRFB FOR REINSTALLATION, PROTECT CONDUIT AND DEMOLISH FOUNDATION
- 8. REINSTALL RRFB WITH NEW FOUNDATION, SEE KETCHUM STANDARD DRAWING 14
- 9. SALVAGE PPB FOR REINSTALLATION, PROTECT CONDUIT AND DEMOLISH FOUNDATION
- 10. REINSTALL PPB WITHIN 10" OF NEW ADA RAMP LANDING, WITH NEW FOUNDATION, SEE SEE ITD STANDARD DRAWING 614-3, AND EXTENDING EXISTING CONDUIT AND CABLE FROM EXISTING PPB LOCATION
- 11. SALVAGE STREET LIGHT FOR REINSTALLATION, PROTECT CONDUIT AND DEMOLISH FOUNDATION
- 12. REINSTALL STREET LIGHT WITH NEW FOUNDATION, SEE KETCHUM STANDARD DRAWING 14
- 13. REMOVE EXISTING CATCH BASIN
- 14A. RETAIN AND PROTECT VALVE; RAISE TO GRADE SEE 1/TD-1, WITHOUT CONCRETE COLLAR
- 15. RETAIN AND PROTECT EXISTING PULLBOX, ADJUST TO GRADE AFTER PAVING
- 22. CONSTRUCT CONCRETE SIDEWALK WITHOUT CURB AND GUTTER, SEE KETCHUM STANDARD DRAWING 7
- 27. MATCH GRADE AND WIDTH
- 28. REMOVE PAVERS TO APPROXIMATE LIMITS SHOWN AND AS REQUIRED TO PROVIDE NEW WORK
- 38. SAWCUT, DEMOLISH, AND REMOVE CONCRETE TO APPROXIMATE LIMITS SHOWN AND AS REQUIRED TO PROVIDE NEW WORK
- 45. CONSTRUCT MODIFIED PEDESTRIAN RAMP SEE 400 SHEETS
- 46. CONSTRUCT ADA RAMP, SEE KETCHUM STANDARD DRAWING 8
- 48. CONSTRUCT CURB RAMP, SEE ITD STANDARD DRAWING 614-3
- 49. INSTALL DETECTABLE WARNING PLATE SEE 4/TD-1
- 50A. RETAIN AND PROTECT MANHOLE; RAISE LID TO GRADE SEE DETAIL 2/TD-1, WITHOUT CONCRETE COLLAR
- 51. INSTALL CATCH BASIN AT FLOWLINE LOW POINT, SEE KETCHUM STANDARD DRAWING 11



FILENAME: 05-C-102_D3576100.dgn

PLOT DATE:

PLOT TIME:

2022 SUN VALLEY ROAD REHABILITATION
KETCHUM AND SUN VALLEY, IDAHO

2022 SUN VALLEY ROAD REHABILITATION
SUN VALLEY ROAD
PLAN AND PROFILE
STA 14+80 TO STA 21+20

JACOBS

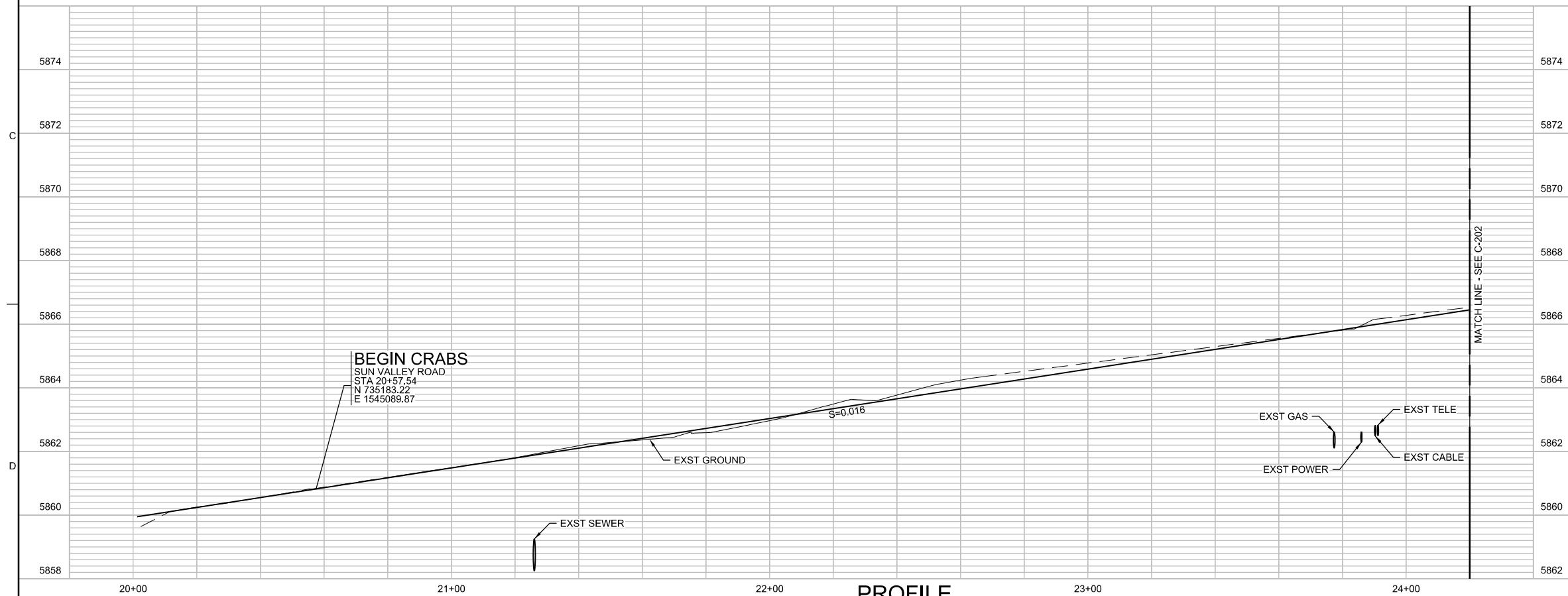
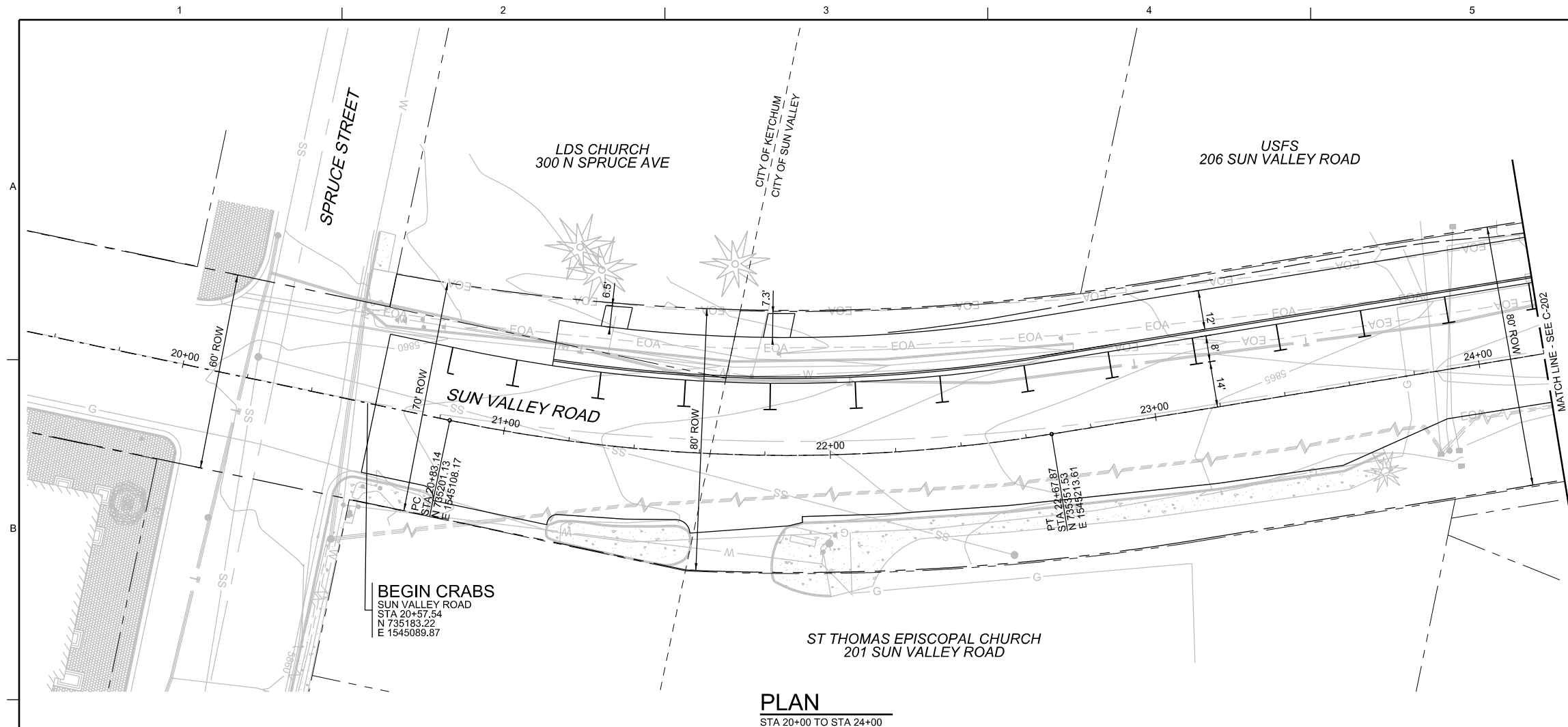
VERIFY SCALE	
BAR IS ONE INCH ON ORIGINAL DRAWING, 1" = 40'	
DATE	FEBRUARY 2022
PROJ	D3489600
DWG	C-102
SHEET	5 of 35

BID DOCUMENTS

REUSE OF DOCUMENTS: THIS DOCUMENT, AND THE IDEAS AND DESIGNS INCORPORATED HEREIN, AS AN INSTRUMENT OF PROFESSIONAL SERVICE, IS THE PROPERTY OF JACOBS AND IS NOT TO BE USED, IN WHOLE OR IN PART, FOR ANY OTHER PROJECT WITHOUT THE WRITTEN AUTHORIZATION OF JACOBS.

DR M FRANZOIA
CHK J OYE
REVISION A THOMPSON
BY APVD B ROBERTS

© JACOBS 2021, ALL RIGHTS RESERVED.



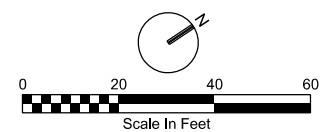
GENERAL NOTES

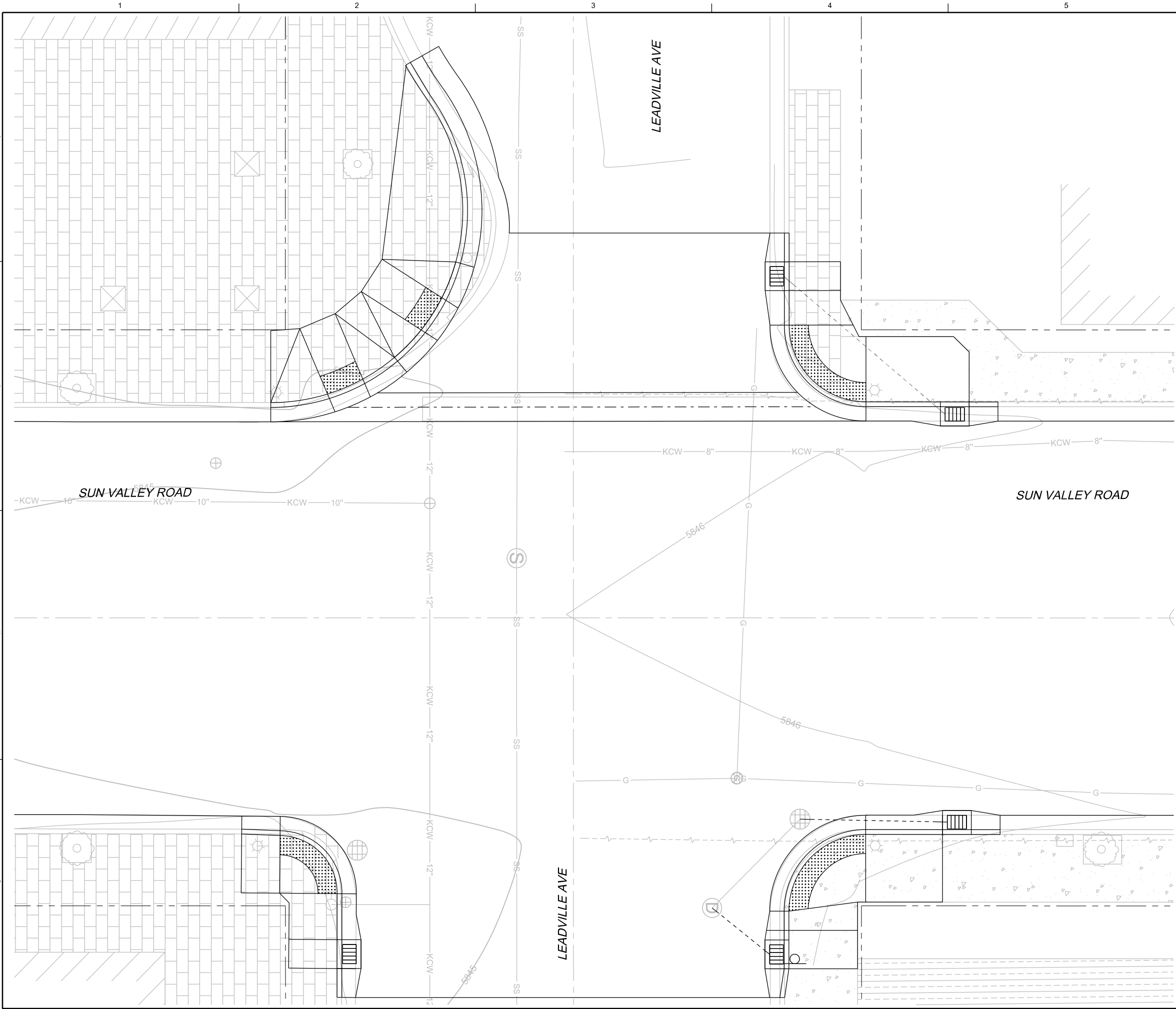
1. CONTRACTOR WORK LIMITS SHALL BE WITHIN PUBLIC RIGHT-OF-WAY OR TEMPORARY CONSTRUCTION EASEMENTS.
2. CONTRACTOR SHALL LOCATE AND FIELD VERIFY ALL UTILITIES PRIOR TO BEGINNING WORK AND ADJUST ALL UTILITY STRUCTURES TO MATCH PROPOSED GRADES.
3. EXISTING SITE FEATURES SHOWN WERE OBTAINED FROM SURVEYS COMPLETED BY GALENA ENGINEERING INC. BETWEEN MARCH 2021 AND APRIL 2021. EXISTING CONTOUR INFORMATION WAS OBTAINED FROM BLAINE COUNTY LIDAR DATA PUBLISHED IN 2015. CONTRACTOR SHALL VERIFY INFORMATION PRIOR TO BEGINNING WORK. SURVEY CONTROL INFORMATION IS SHOWN ON G-003.
4. SEE G-2 FOR GENERAL NOTES, LEGEND, AND ABBREVIATIONS.
5. SEE TS-301 FOR TYPICAL ROADWAY AND PATH SECTION INFORMATION.
6. SEE C-404 FOR SPRUCE AVE RAMP AND SIDEWALK GRADING INFORMATION.
7. SURFACE RESTORATION (LANDSCAPING, INCLUDING BUT NOT LIMITED TO: TOPSOIL, SEED, SOD AND IRRIGATION MODIFICATIONS) AND PAVER DRIVEWAY WORK (REMOVING PAVERS, ADJUSTING SNOWMELT SYSTEMS, AND REPLACING PAVERS) TO BE COMPLETED BY OTHERS.
8. PROVIDE PERMANENT PAVEMENT MARKINGS ON ENTIRE NEW ROADWAY SURFACE TO MATCH PAVEMENT MARKINGS OF EXISTING PORTION OF SUN VALLEY ROAD AND ADJACENT PATH. IN ADDITION TO EXISTING MARKINGS, SEE SHEET SN201 FOR NEW MARKINGS.

SHEET KEYNOTES

1. RETAIN AND PROTECT
2. SAWCUT, DEMOLISH, AND REMOVE ASPHALT PAVEMENT TO APPROXIMATE LIMITS SHOWN AND AS REQUIRED TO PROVIDE NEW WORK
4. SAWCUT, DEMOLISH AND REMOVE CONCRETE CURB AND GUTTER
5. SALVAGE SIGN AND POST FOR REINSTALLATION, DEMOLISH FOUNDATION
6. REINSTALL SIGN AND POST WITH NEW FOUNDATION, SEE KETCHUM STANDARD DRAWING 13
16. MATCH INTO GRADES OF EXISTING WALKWAY WITH NEW CONCRETE SIDEWALK
19. MATCH NEW ASPHALT CONCRETE TO EXISTING DRIVEWAY
22. CONCRETE SIDEWALK WITHOUT CURB AND GUTTER, SEE KETCHUM STANDARD DRAWING 7
27. MATCH GRADE AND WIDTH

CURVE TABLE

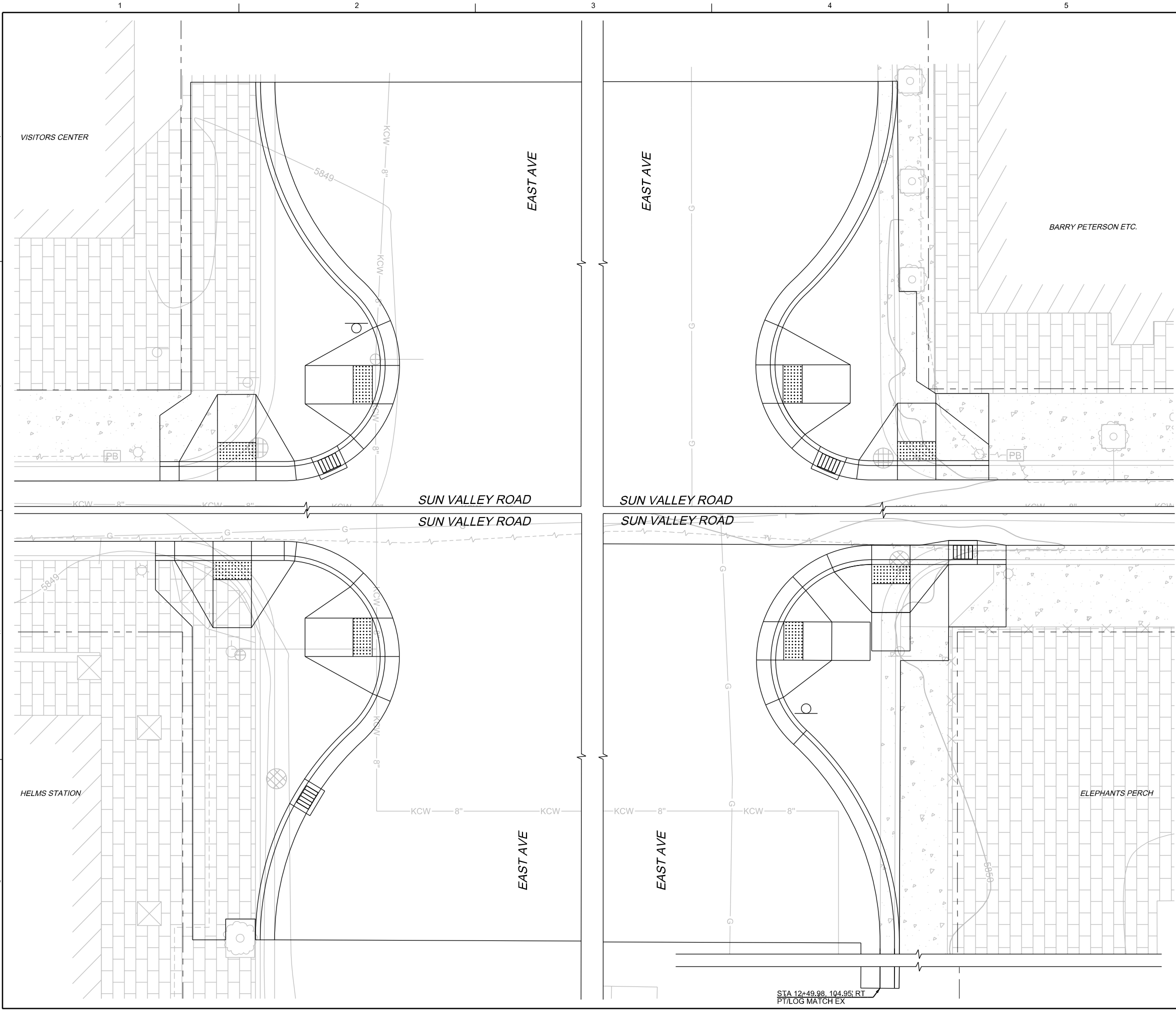




GENERAL NOTES

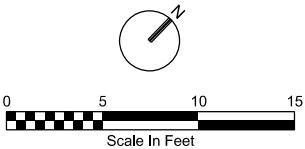
- CONTRACTOR WORK LIMITS SHALL BE WITHIN PUBLIC RIGHT-OF-WAY OR TEMPORARY CONSTRUCTION EASEMENTS.
- CONTRACTOR SHALL LOCATE AND FIELD VERIFY ALL UTILITIES PRIOR TO BEGINNING WORK AND ADJUST ALL UTILITY STRUCTURES TO MATCH PROPOSED GRADES.
- EXISTING SITE FEATURES SHOWN WERE OBTAINED FROM SURVEYS COMPLETED BY GALENA ENGINEERING INC. OCTOBER 2021. CONTRACTOR SHALL VERIFY INFORMATION PRIOR TO BEGINNING WORK. SURVEY CONTROL INFORMATION IS SHOWN ON G-3.
- SEE G-2 FOR GENERAL NOTES, LEGEND, AND ABBREVIATIONS.
- SEE TS-301 FOR TYPICAL ROADWAY SECTION INFORMATION.
- DETECTABLE WARNING TILES SHALL FOLLOW KETCHUM STANDARD DRAWING 9. INSTALL DETECTABLE WARNING PLATE PER MANUFACTURER'S INSTRUCTIONS.
- PROVIDE NEAT SAWCUT LINES AT LIMITS OF REMOVAL. CONTRACTOR SHALL PATCH OR REPAIR DAMAGED ASPHALT OR CONCRETE RESULTING FROM SAWCUT.

2022 SUN VALLEY ROAD REHABILITATION KETCHUM AND SUN VALLEY, IDAHO		NO. DATE		REVISION		BY APVD		A THOMPSON		B ROBERTS	
		DSGN		CHK		APVD		J OYE		M FRANZOIA	
		DR		CHK		APVD		A THOMPSON		B ROBERTS	
		APVD		CHK		APVD		J OYE		M FRANZOIA	
2022 SUN VALLEY ROAD REHABILITATION SUN VALLEY RD/LEADVILLE AVE ENLARGED VIEW		DATE		REVISION		BY APVD		A THOMPSON		B ROBERTS	
		DSGN		CHK		APVD		J OYE		M FRANZOIA	
		DR		CHK		APVD		J OYE		M FRANZOIA	
		APVD		CHK		APVD		J OYE		M FRANZOIA	
VERIFY SCALE		DATE		REVISION		BY APVD		A THOMPSON		B ROBERTS	
BAR IS ONE INCH ON ORIGINAL DRAWING.		DSGN		CHK		APVD		J OYE		M FRANZOIA	
0 5 10 15		DATE		REVISION		BY APVD		A THOMPSON		B ROBERTS	
Scale In Feet		DSGN		CHK		APVD		J OYE		M FRANZOIA	
DATE		DATE		REVISION		BY APVD		A THOMPSON		B ROBERTS	
FEBRUARY 2022		DSGN		CHK		APVD		J OYE		M FRANZOIA	
PROJ		DATE		REVISION		BY APVD		A THOMPSON		B ROBERTS	
D3489600		DSGN		CHK		APVD		J OYE		M FRANZOIA	
DWG		DATE		REVISION		BY APVD		A THOMPSON		B ROBERTS	
C-401		DSGN		CHK		APVD		J OYE		M FRANZOIA	
SHEET		DATE		REVISION		BY APVD		A THOMPSON		B ROBERTS	
6 of 35		DSGN		CHK		APVD		J OYE		M FRANZOIA	



GENERAL NOTES

1. CONTRACTOR WORK LIMITS SHALL BE WITHIN PUBLIC RIGHT-OF-WAY OR TEMPORARY CONSTRUCTION EASEMENTS.
2. CONTRACTOR SHALL LOCATE AND FIELD VERIFY ALL UTILITIES PRIOR TO BEGINNING WORK AND ADJUST ALL UTILITY STRUCTURES TO MATCH PROPOSED GRADES.
3. EXISTING SITE FEATURES SHOWN WERE OBTAINED FROM SURVEYS COMPLETED BY GALENA ENGINEERING INC. OCTOBER 2021. CONTRACTOR SHALL VERIFY INFORMATION PRIOR TO BEGINNING WORK. SURVEY CONTROL INFORMATION IS SHOWN ON G-3.
4. SEE G-2 FOR GENERAL NOTES, LEGEND, AND ABBREVIATIONS.
5. SEE TS-301 FOR TYPICAL ROADWAY SECTION INFORMATION.
6. DETECTABLE WARNING TILES SHALL FOLLOW KETCHUM STANDARD DRAWING 9. INSTALL DETECTABLE WARNING PLATE PER MANUFACTURER'S INSTRUCTIONS.
7. PROVIDE NEAT SAWCUT LINES AT LIMITS OF REMOVAL. CONTRACTOR SHALL PATCH OR REPAIR DAMAGED ASPHALT OR CONCRETE RESULTING FROM SAWCUT.



JACOBS

2022 SUN VALLEY ROAD REHABILITATION
SUN VALLEY RD/EAST AVE
ENLARGED VIEW

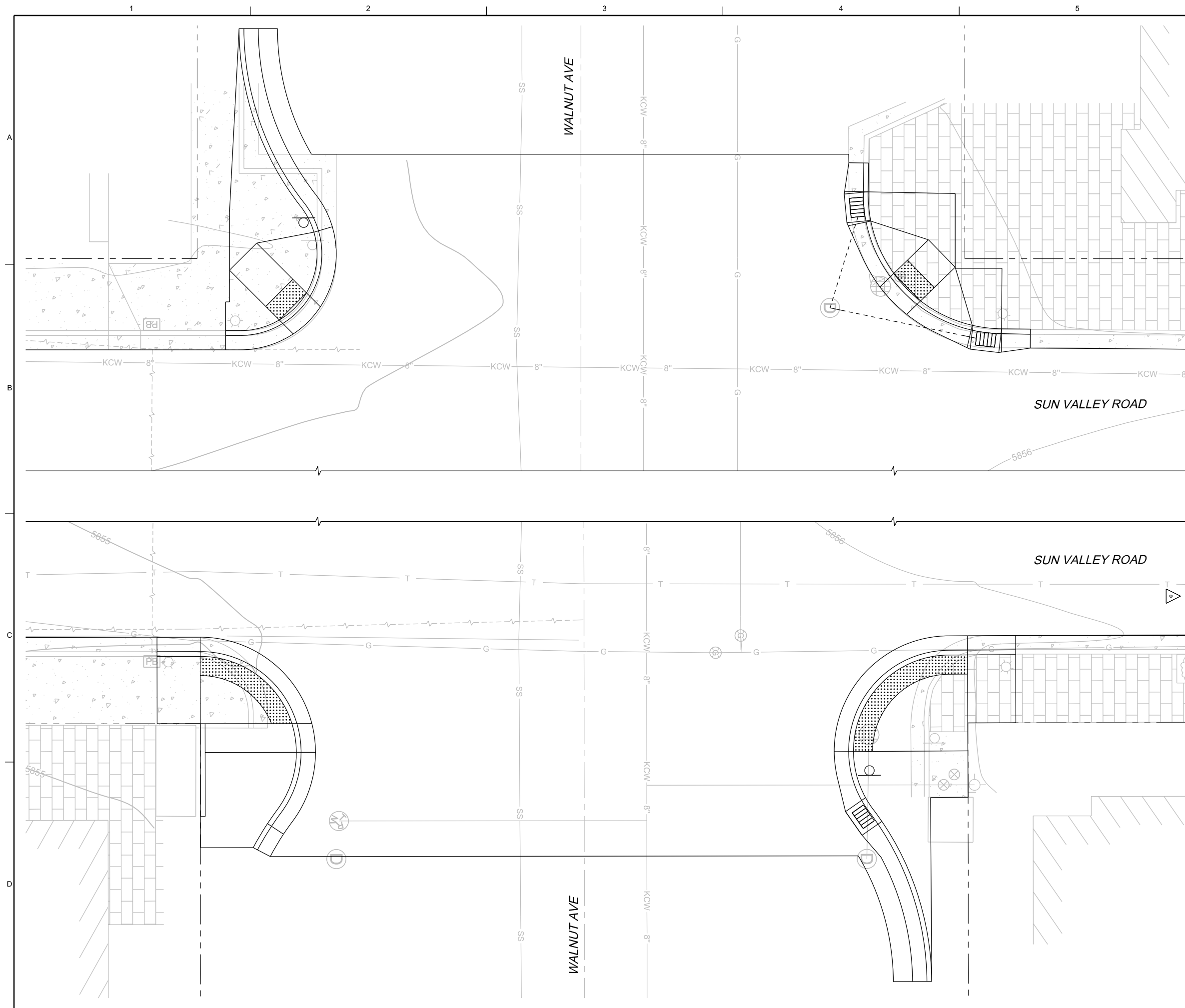
2022 SUN VALLEY ROAD REHABILITATION
KETCHUM AND SUN VALLEY, IDAHO

VERIFY SCALE	
BAR IS ONE INCH ON ORIGINAL DRAWING, 1" = 10'	
DATE	FEBRUARY 2022
PROJ	D3489600
DWG	C-402
SHEET	7 of 35

BID DOCUMENTS

DSGN		NO.	DATE	DR	CHK	REVISION	BY	APVD
M FRANZOIA								
J OYE								
A THOMPSON								
B ROBERTS								

REUSE OF DOCUMENTS: THIS DOCUMENT, AND THE IDEAS AND DESIGNS INCORPORATED HEREIN, AS AN INSTRUMENT OF PROFESSIONAL SERVICE, IS THE PROPERTY OF JACOBS AND IS NOT TO BE USED, IN WHOLE OR IN PART, FOR ANY OTHER PROJECT WITHOUT THE WRITTEN AUTHORIZATION OF JACOBS. © JACOBS 2021, ALL RIGHTS RESERVED.



GENERAL NOTES

1. CONTRACTOR WORK LIMITS SHALL BE WITHIN PUBLIC RIGHT-OF-WAY OR TEMPORARY CONSTRUCTION EASEMENTS.
2. CONTRACTOR SHALL LOCATE AND FIELD VERIFY ALL UTILITIES PRIOR TO BEGINNING WORK AND ADJUST ALL UTILITY STRUCTURES TO MATCH PROPOSED GRADES.
3. EXISTING SITE FEATURES SHOWN WERE OBTAINED FROM SURVEYS COMPLETED BY GALENA ENGINEERING INC. OCTOBER 2021. CONTRACTOR SHALL VERIFY INFORMATION PRIOR TO BEGINNING WORK. SURVEY CONTROL INFORMATION IS SHOWN ON G-3.
4. SEE G-2 FOR GENERAL NOTES, LEGEND, AND ABBREVIATIONS.
5. SEE TS-301 FOR TYPICAL ROADWAY SECTION INFORMATION.
6. DETECTABLE WARNING TILES SHALL FOLLOW KETCHUM STANDARD DRAWING 9. INSTALL DETECTABLE WARNING PLATE PER MANUFACTURER'S INSTRUCTIONS.
7. PROVIDE NEAT SAWCUT LINES AT LIMITS OF REMOVAL. CONTRACTOR SHALL PATCH OR REPAIR DAMAGED ASPHALT OR CONCRETE RESULTING FROM SAWCUT.

[illegible]

2022 SUN VALLEY ROAD REHABILITATION
KETCHUM AND SUN VALLEY, IDAHO

2022 SUN VALLEY ROAD REHABILITATION
SUN VALLEY RD/WALNUT AVE
ENLARGED VIEW

JACOBS

JACOBS

2022 SUN VALLEY ROAD REHABILITATION

VERIFY SCALE

BAR IS ONE INCH ON
ORIGINAL DRAWING.

DATE	FEBRUARY 2022
------	---------------

DATE	FEBRUARY 2022
PROJ	D3489600

DWG	C-403
-----	-------

SHEET	8 of	35
-------	------	----

5

3

0

2

BID DOCUMENTS

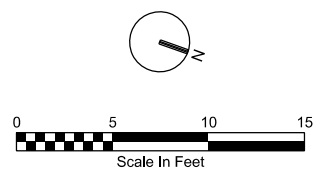
	W. FRANKLIN	J. OTE	A. THOMPSON	B. ROBERTS
REUSE OF DOCUMENTS:	THIS DOCUMENT, AND THE IDEAS AND DESIGNS INCORPORATED HEREIN, AS AN INSTRUMENT OF PROFESSIONAL SERVICE, IS THE PROPERTY OF JACOBS AND IS NOT TO BE USED IN WHOLE OR IN PART FOR ANY OTHER PROJECT WITHOUT THE WRITTEN AUTHORIZATION OF JACOBS.			

© JACOBS 2021. ALL RIGHTS RESERVED.



GENERAL NOTES

1. CONTRACTOR WORK LIMITS SHALL BE WITHIN PUBLIC RIGHT-OF-WAY OR TEMPORARY CONSTRUCTION EASEMENTS.
2. CONTRACTOR SHALL LOCATE AND FIELD VERIFY ALL UTILITIES PRIOR TO BEGINNING WORK AND ADJUST ALL UTILITY STRUCTURES TO MATCH PROPOSED GRADES.
3. EXISTING SITE FEATURES SHOWN WERE OBTAINED FROM SURVEYS COMPLETED BY GALENA ENGINEERING INC. OCTOBER 2021. CONTRACTOR SHALL VERIFY INFORMATION PRIOR TO BEGINNING WORK. SURVEY CONTROL INFORMATION IS SHOWN ON G-3.
4. SEE G-2 FOR GENERAL NOTES, LEGEND, AND ABBREVIATIONS.
5. SEE TS-301 FOR TYPICAL ROADWAY SECTION INFORMATION.
6. DETECTABLE WARNING TILES SHALL FOLLOW KETCHUM STANDARD DRAWING 9. INSTALL DETECTABLE WARNING PLATE PER MANUFACTURER'S INSTRUCTIONS.
7. PROVIDE NEAT SAWCUT LINES AT LIMITS OF REMOVAL. CONTRACTOR SHALL PATCH OR REPAIR DAMAGED ASPHALT OR CONCRETE RESULTING FROM SAWCUT.



JACOBS.

2023 SUN VALLEY ROAD REHABILITATION
SUN VALLEY RD/SPRUCE AVE
ENLARGED VIEW

2022 SUN VALLEY ROAD REHABILITATION
KETCHUM AND SUN VALLEY, IDAHO[illegible]

35	BID DOCUMENTS
04	
00	
22	

REUSE OF DOCUMENTS:	M FRANZOIA	J OYE	A THOMPSON
---------------------	------------	-------	------------

BERTS
© JACOBS 2021. ALL RIGHTS RESERVED.

